

Changing ROOMS

A dark and dated penthouse is transformed to embrace 21st century living



Opposite and Left
Located in one of Sydney's premier harbour locations, the penthouse is afforded magnificent views from the newly refurbished and covered terrace.



before

WORDS James Cleland PHOTOGRAPHY Brett Boardman

When I hear the word "penthouse" what often comes to mind are images of exclusive, high-end apartments where the owners recline in the lap of luxury, sipping champagne on private balconies with multi-million-dollar views.

However, the owners of this penthouse property, which is located in the inner eastern suburbs of Sydney, found themselves in an awkward, dark and dated eyesore of an apartment dating back to the 1960s. It had poor storage, a small bathroom and kitchen, obvious traces of once-external areas and criminally poor use of an outer terrace with harbour views. The owners were in dire need of expert help to create a private domain that reflected their own aesthetic and to create an apartment befitting the notions of a modern inner-city penthouse.

Rising to the occasion, architect Christopher Polly approached this project with vigour. The aim was to bring the design and look of the property into the 21st century and transform a two-room dwelling, with an awkward and cramped living area, into completely new and custom-designed interior and exterior spaces while improving the various amenities.

Taking on the hindrance of a single common lift to access the apartment, the architect set to work creating a flexible home with spacious amenities and modern interiors with flow and



Opposite and this page
The redesign of the internal spaces included reconfiguration of walls and the installation of a joinery device that split the area of the home in two. An overhaul of the internal joinery also provides more storage space.



connection to the outer terrace that would fully utilise the views afforded from such a vantage point.

Initial stages of redesign were the reconfiguration of the internal walls between the bathroom and WC, the second bedroom, hallway and living areas as well as the kitchen and dining space including one of the kitchen's walls. This wall also connects the kitchen to the outside terrace entertainment area and the views overlooking the harbour via a frameless corner window and glass sliding door.

The internal redesign featured a joinery device that split the areas of the home in two. Running from the entrance through to the northern terrace, it was designed as a means to unify the wall alignments along the entire length of the communal area, and as the threshold used to signify the boundaries of the intimate and public areas of the home.

Overhaul of the internal joinery also allowed increased storage space to be implemented as well as a series of large sliding and pivoting panels that could either form the boundaries for the

**Opposite**

The streamlined and modern kitchen is connected to the outdoor terrace area, providing ease of access when entertaining.

Left

An all-white kitchen pops with colour provided by the studded rubber floor and kickplates in Manhattan Red.



of glazed windows and smart placement of insulation create a climate that remains comfortable, year-round. The flexibility of the new room configurations allows for a multi-faceted approach that adjusts to the owners' needs as desired.

According to Christopher, a two-fold approach to the entire redesign is what makes this renovation architecturally special. "The clear delineation of the public and private domains in the arrangement simultaneously enables particular spaces to flexibly borrow from, expand into or contract from other spaces as required to offer a variety of unique spatial configurations," he explains. "There is also a strong physical and visual connection of spaces to the terrace to enhance the amenity of, and relationships between, the living, kitchen and terrace areas that encompasses a link of borrowed light through a bedroom to an internal bathroom and overriding strategy of fully integrated lighting and storage."

These design decisions create a home with a natural rhythm in all areas of the internal space. **R**

second room or allow it to be opened to the rest of the public domain. As a secondary feature, the makeover of the internal joinery provided a means of installing and integrating a new lighting system along the walls that matched the rhythm of the new interior. This overcame the limitations set by the existing roof slab for overhead lighting solutions and the challenge of how to bring more light into the internal areas when natural lighting was unavailable.

The external terrace was wholly refurbished with new seating and outdoor dining areas, including a barbecue, which of course is essential to any modern Australian outdoor

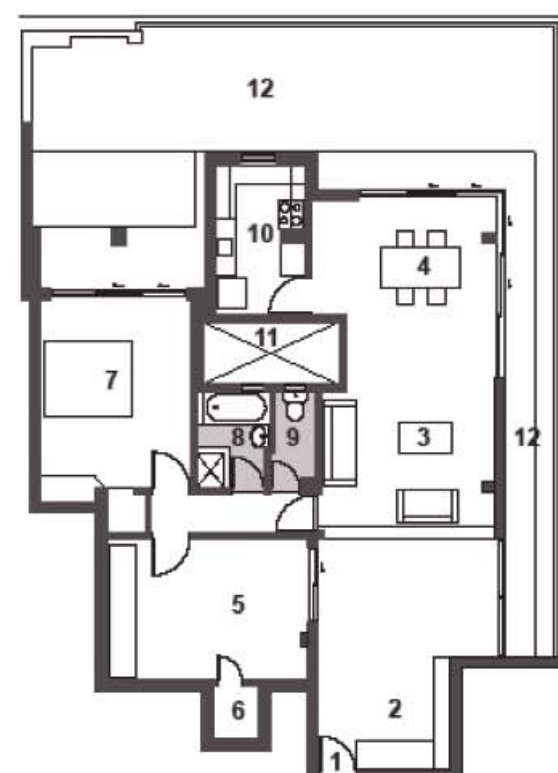
entertainment setting. A cantilevered steel-framed pergola with integrated adjustable louvres and lighting extends along the entire northern exterior. This provides protection to the exposed northern-oriented glazing and increases the function and comfort of the terrace throughout the seasons. An added design decision was the inclusion of an external mirror that reflected harbour views into the main bedroom and solved the question of how to improve the relationship between the spectacular harbour views and the intimacies of the private quarters of the home.

The natural lighting and ventilation, use



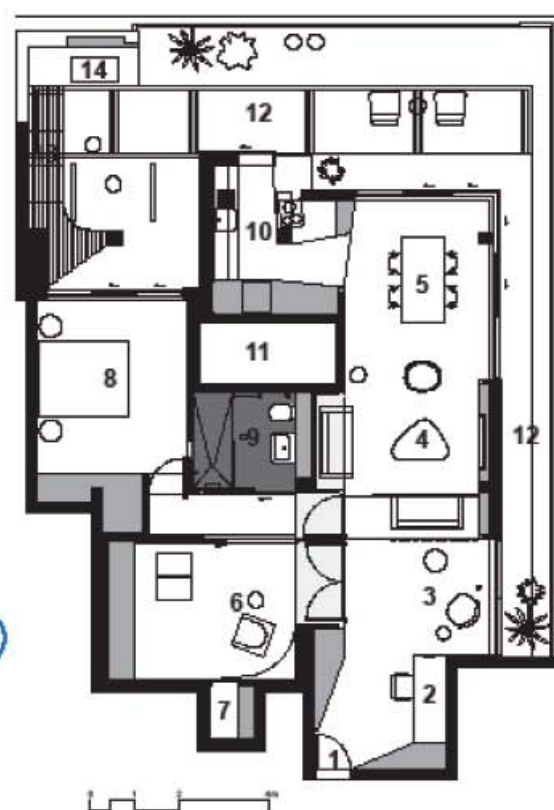
Opposite and left
The compact bathroom features a concealed cistern, wall-hung toilet and hand basin and mirrored walls.

Above
Built-in wardrobes feature in the master bedroom and an external mirror reflects harbour views inside.



Existing floor plan

- | | |
|---------------|----------------------------|
| 1. Entry | 7. Bedroom |
| 2. Study | 8. Bathroom |
| 3. Living | 9. WC |
| 4. Dining | 10. Kitchen |
| 5. Guest room | 11. Building service riser |
| 6. Store | 12. Terrace |



New floor plan

- | | |
|-----------------|----------------------------|
| 1. Entry | 8. Bedroom |
| 2. Study | 9. Bathroom |
| 3. Sitting | 10. Kitchen |
| 4. Living | 11. Building service riser |
| 5. Dining | 12. Terrace |
| 6. Guest/Living | 13. Bench & Storage |
| 7. Wine store | 14. BBQ |

project particulars

This project was designed by
CHRISTOPHER POLLY ARCHITECT
17 Harold Street, Newtown NSW 2042
Tel 02 9516 5994
Email mail@christopherpolly.com
Web www.christopherpolly.com

This project was built by:
PAUL KING PTY LTD
Tel (02) 9558 2747
Licence number 131439C

FLOORING

Kitchen: Activa studded rubber flooring and kickplates in Manhattan Red

Dining/living/bedrooms: Hycraft Intertwine high/low-profile 100 per cent wool carpet in Sable

Entry/study: Hycraft Intertwine high/low-profile 100 per cent wool carpet in Sable; recycled blackbutt with clear natural oil finish to entry threshold

Entry vestibule: Activa studded rubber flooring and kickplates in Black

Terrace: Seamless Surfaces Quartz Carpet with open-pore finish in Charcoal

WALLS

Kitchen: CSR plasterboard painted in Dulux Fair Bianca half-strength

Dining: Polyurethane finish to new fixed wall panels, existing walls and columns in Dulux in Fair Bianca half-strength

Living/bedrooms: Polyurethane finish to new and existing fixed wall panels in Dulux Fair Bianca half-strength

External walls: Acrylic render painted in Dulux White; Mirror in white powder-coat flush-angle frame

KITCHEN

Benchtop: DuPont Corian benchtops in Cirrus White

Splashback: Mirror

Cabinetry: Polyurethane finishes to doors, drawers and fixed panels in Dulux Fair Bianca half-strength

Appliances: Miele induction cooktop, Neff oven, Ilve integrated rangehood, Miele integrated dishwasher, Fisher & Paykel integrated refrigerator

Other: Franke sinks, Gessi sink mixer, Zip Chilltap water filter, Industrial Expression pulls to tall door panels, Blum hinges, drawer runners and Orga-Line drawer systems

JOINERY

Bedrooms/hall: Polyurethane finishes in Dulux Fair Bianca half-strength

Guest room: Dorma floor springs and top pivots; Dulux Fair Bianca half-strength on sliding door panel with Centor top track system and guide, and Madinoz flush pulls; Polyurethane finishes to all joinery; unit door and fixed panels in Dulux Fair Bianca half-strength with Industrial Expression door pulls and Blum hinges;

Outside of Guest room: Sustainable select-grade blackbutt study desk with clear, natural finish; mirror in white powder-coated flush-angle frame (to end of hall)

BATHROOM FITTINGS

Cabinetry: Mirror wall — fixed mirrors and mirror-faced door panels to overhead units, polyurethane-finished recessed shelf and wall panel

Basin: Pozzi Ginori Q3 wall basin

Walls & floor: Charcoal porcelain wall and floor tiles

Ceiling: CSR Aquachek plasterboard ceiling, Dulux painted

Fixtures: Pozzi Ginori Q3 wall-hung toilet pan; Ideal Standard Hideaway concealed cistern; Hydrotherm heated towel rail; Madinoz soap tray, toilet roll holder, brush holder and robe hooks

Taps: Hansgrohe Puro basin mixer

Shower/bath: Waterslide wall shower outlet & Hansgrohe Puro shower mixer

LIGHTING

XAL Minimal 100 fully recessed lights vertically integrated, Rovasi BSM trim-free recessed downlights, Sylvania SlimLite concealed fluorescent strip lights, Lumascape Pagoda exterior lights, integrated waterproof fluorescent battens to pergola

WINDOWS + EXTERNAL DOORS

Windows: Capral shallow pocket frames, white powder-coated finish with grey-toned fixed toughened glass; Capral shallow pocket frames, white powder-coat finish with clear fixed window to bathroom, toughened glass and 3M frosted film

Doors: Aluminium-framed sliding glass doors, White powder-coated finish; Dulux White painted exposed mild steel kitchen

door frame; Centor track and guide to kitchen door from Lockwood hardware

OUTDOORS

Roof: Colorbond folded steel sheet roof edge cappings in Colorbond Surfsmist, CSR Fibre Cement soffits painted in Dulux White, Mild steel-framed pergola painted in Dulux White, JVI non-retractable operable louvre systems with powder-coated white finish

Terrace: Seamless Surfaces Quartz Carpet with open-pore finish in Charcoal; low bench and recycled blackbutt boards and linings over waterproof plywood substrates to barbecue bench with clear, natural oil finish

Heating: Rheem hot water system, reverse-cycle ducted air conditioning system

Entry door: Joinery units angle towards the entry door. This gives a first impression of impressive spaciousness. The longer joinery element enables the open door to sit flush with, and nestle into, the gap provided at the commencement of this joinery unit