

# RENOVATE

— projects, products & ideas —

**20**  
fabulous  
storage  
solutions

*How to*

*CREATE THE  
IDEAL SPACE FOR  
ENTERTAINING*

RENOVATING FOR  
**PROFIT**  
THE ROAD TO RICHES

**SOUND  
ADVICE FROM  
THE EXPERTS**

*think big, live small*

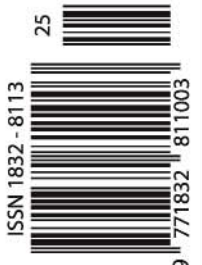
**SAVE SPACE WITHOUT SACRIFICING STYLE**

**PLUS: BEFORE & AFTER, FLOORPLANS & HOW THEY DID IT**



Vol.7 No.4  
AUS \$9.95\*  
(Incl. GST)

www.completehome.com.au







The slanted roof offers an attractive exterior.

# LET THERE BE light

With the help of architect Christopher Polly, the original dwelling has been devoured — a brand new, refreshed home standing in its place

WORDS Caitlin Chander

PHOTOGRAPHY Brett Boardman Photography

Every home needs space and light to make it liveable. For the clients of this dwelling, space and luminescence were very hard to come by. With a family of two adults and two children, a house with three lean-tos restricted living and personal space. The oddly shaped structure did not allow much light or flow through the house and so the entire dwelling was in need of a change.

The transformation into a three-bedroom home with two living spaces was achieved thanks to architect Christopher Polly's innovative design.

Essentially, it was the rear of the house that required the most innovation, according to Christopher. The front of the house was kept virtually intact, while the rear was the main focus of the project. "The retention of the original front dwelling and existing bathroom enabled old and new fabric to create an alternating sequence of compression and expansion," he says.

The initial design idea was spawned by the desire to provide separate living spaces for the adults and children. The creation of two living spaces means that one area provides a 'day' living area for meal preparation and eating. This spacious room is given more light thanks to the flow created between the room itself and the connected back garden. The second space is an upper living room to be used as an 'evening' zone, a space for after-work relaxation, separate from utilities.

Christopher's incorporation of both new and existing features has meant that while there has been a complete renewal of the interior, certain aspects remain the same to keep in touch with the existing flair of the home.

"The new works entailed the grafting of a singular substantial volume," he says, "enabling old and new fabric to enmesh a unique spatial sequence along the length of the dwelling that is perhaps counterintuitive to popular planning methods."

With the three lean-tos all situated at the back of the house, the whole rear of the home was demolished — all lean-tos entirely removed to make room for more light and



before





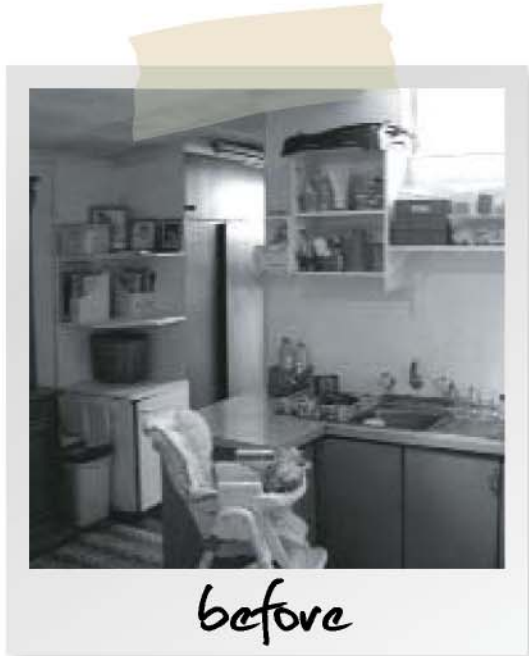
The bold pendant lights illuminate the space.



The open-plan design increases a feeling of space.

ventilation. The addition of highlight windows bridging the high and low roofs enables increased access to natural ventilation and light. These windows also give incredible views of the surrounding canopies and sky. The connection between the home and the natural landscape is also inherent in the unusual roofed terrace. Connected by glass sliding doors, the terrace is the portal between the home and the outer world.

The structure's relationship with the natural world is heightened by the economic and ecologically sustainable features that have been added. Viridian ComfortPlus low-E and grey-toned glass used for the windows and the doors retains heat within the dwelling, while the high-level louvres encourage ventilation and draw hot air up and out of the living areas. Such features are






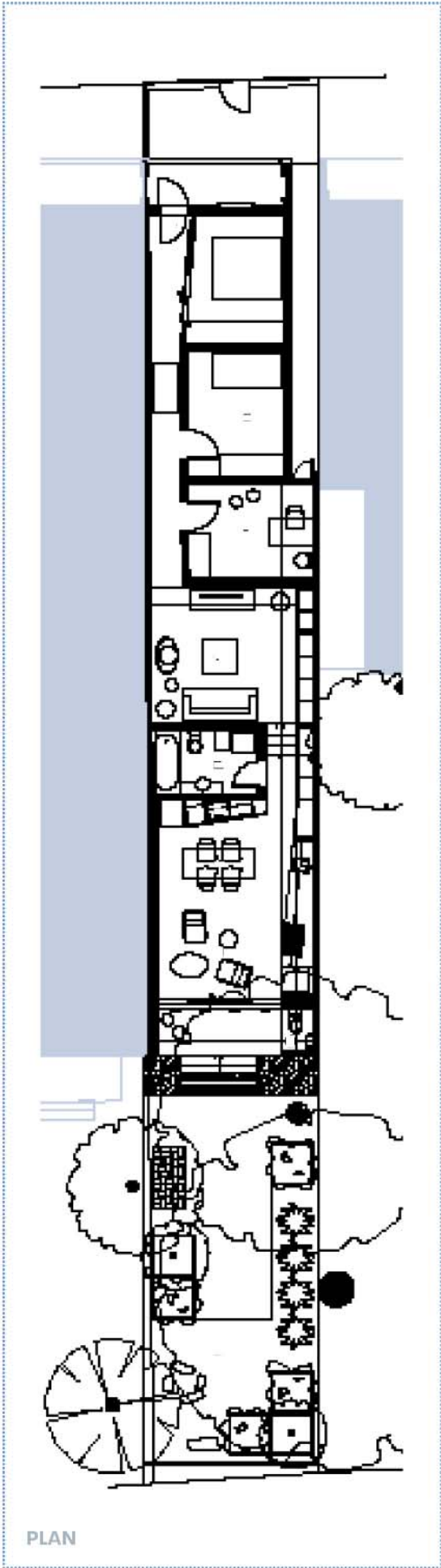


High ceilings and open rooms encourage circulation and airflow.

environmentally sustainable alternatives to pricey airconditioning systems. The recycled blackbutt timber floors are a distinctive addition, contrasting nicely with the neutral-toned walls. Light fittings and appliances, as well as the water-saving tap fittings, all increase the energy efficiency of this home.

The finished project is one that is both ecologically and family friendly. “A conceptually vigorous form has enabled vastly expanded access to light and ventilation to heighten the spirits of its inhabitants,” Christopher explains, “with a controlled material palette and colour scheme that

provides an appropriate counterpoint for their colourful lives.” The desires of the client were completely taken into account in every aspect of this renovation. The end result provided the the family with a more spacious and liveable home to meet its lifestyle needs. 



project particulars

**CHRISTOPHER POLLY ARCHITECT**  
17 Harold Street, Newtown NSW 2042  
**Tel 02 9516 5994**  
**Email** mail@christopherpolly.com  
**Web** www.christopherpolly.com

**Builder:** Paul King Pty Ltd  
**Tel** 02 9558 2747  
**Licence number** 131439C

**FLOORING**  
**Kitchen/dining/family/deck/bathroom:** Polished concrete slab, CCS black oxide and matte acrylic sealer  
**Living and bedrooms:** Recycled blackbutt tongue-and-groove strip floor; Feast Watson charcoal grey stain and oil finish

**WALLS**  
**Kitchen:** CSR plasterboard, painted Dulux White on White  
**Dining/family:** Shiplap timber boards and CSR plasterboard, painted Dulux White on White  
**Living and bedrooms:** CSR plasterboard, painted Dulux White on White  
**External walls:** Brick veneer; painted CSR fibre cement, painted shiplap timber boards; Bluescope sheet steel cappings Colorbond Night Sky; CSR R3.0 batt insulation

**KITCHEN**  
**Benchtop:** Laminex black laminate finish  
**Splashback:** Mirror splashback  
**Cabinetry:** Laminex white laminate finish, Laminex black laminate finish to fridge unit, underside of overhead units and kickboards  
**Appliances:** Fisher & Paykel integrated refrigerator, Westinghouse oven and cooktop, Electrolux integrated rangehood, Whirlpool integrated dishwasher  
**Other:** Industrial Expression pulls, Clark sink, Reece sink mixer, Blum hinges, drawer runners and Orga-Line drawer system

**BATHROOM FITTINGS**  
Existing bathroom was renovated by client prior to new works  
**Basin:** Fowler Regent mini wall basin  
**Walls:** CSR fibre cement wall and ceilings, painted Porters custom mixed gold paint  
**Sanitary fixtures:** Caroma Raymor toilet suite  
**Taps:** Caroma Nordic basin mixer

**LAUNDRY**  
**Cabinetry:** Laminex white laminate finish; Laminex black laminate finish to sink unit and overhead shelf unit; shiplap timber boards painted Dulux White on White  
**Fixtures:** Electrolux washing machine and dryer; Clark flush tub; Caroma sink mixer

**WINDOWS + EXTERNAL DOORS**  
**Windows:** WRC framed pivot stay windows, oiled finish; Capral anodised aluminium shallow pocket concealed frames for fixed glazing; Breezway Altair louvres; Viridian ComfortPlus low-E and grey-toned glass; 3M translucent film for frosted fixed glazing sections; Dulux painted exposed mild steel window plates; Lockwood and Modrick hardware  
**Doors:** WRC framed sliding-glass doors with Brio tracks and glides, oiled finish; Dulux White on White painted exposed mild steel door head; Viridian ComfortPlus low-E glass; Lockwood, Madinoz and Modric hardware; Centor track and guide for solid core bedroom sliding door

**OUTDOOR**  
**Roof:** Lysaght Klip-lok 700 Hi-Strength Colorbond Windspray; BlueScope sheet steel cappings Colorbond Night Sky; CSR R3.0 batt roof and ceiling insulation  
**Decking:** Polished concrete slab, CCS black oxide and matte acrylic sealer; recycled blackbutt steps  
**Landscaping:** Nepean river gravel and Western White pebbles; treated pine sleepers; black painted planter boxes; bark mulch  
**Exterior bench:** Recycled stacked bricks

**Heating:** Rinnai instantaneous gas hot water system; Devi in-slab heating system  
**Green points:** Retention of a portion of the existing dwelling including the existing bathroom; CSR R3.0 batt roof, ceiling, wall and underfloor insulation; grey-toned and low-E glazing on windows; natural light, cross ventilation and access to sky via highlight windows; passive solar design with concrete floor as heat sink; recycled blackbutt flooring, energy-efficient light fittings and appliances and water-saving sanitary and tap fittings; no airconditioning