

christopher polly architect

Nominated Architect: C Polly, ARB No. 7150  
17 Harold Street, Newtown NSW 2042 Australia  
+61 2 9516 5994  
mail@christopherpolly.com  
christopherpolly.com





# christopher polly architect

Nominated Architect: C Polly, ARB No. 7150  
17 Harold Street, Newtown NSW 2042 Australia  
+61 2 9516 5994  
mail@christopherpolly.com  
christopherpolly.com

## profile

### Christopher Polly Architect

Christopher Polly Architect is an award-winning full-service architecture and interiors practice based in Sydney Australia. It engages with clients who share in the reward of accomplishing bold architectural visions to enrich their daily lives, who prioritise quality over quantity, and who place value in achieving inventive and well-crafted spaces that are meticulously detailed and finished.

The practice distils a holistic detail design approach in the delivery of highly creative and pragmatic architectural solutions that resonate conceptual rigour and a command of materials and systems. A strong emphasis is placed on a critical synthesis of the opportunities and constraints of each site, context and client brief for the creation of uniquely appropriate and sustainable outcomes in response to place, landscape and patterns of use.

The practice has been widely published locally and internationally, and has garnered a reputation for delivering design excellence on often complex sites. It has extensive experience across varied scales and building types and provides highly personalised architectural services to clients engaged in all stages of each project - underscored by solid working relationships with consultants and builders. Projects encompass new houses, additions and alterations to existing houses, and boutique retail, restaurant and workplace environments.

## director

### Christopher Polly

Christopher Polly is a registered architect who was educated at the University of New South Wales, graduating with Class 1 Honours, the *Australian Institute of Architects NSW Chapter Prize* (best in state) and the *Frank Fox Memorial Prize* for his thesis on the urban design of Battery Park City in New York.

Prior to establishing private practice, he held a senior position with Tzannes Associates and previously worked within the practice of Candalepas Associates. He has presented works in tours and talks, has been a juror for University of Technology final architecture studio presentations and was a selected juror for the 2017 AIA NSW Architecture Awards for Residential Architecture-Houses (New and Alterations & Additions).

### Memberships, Qualifications & Education

Australian Institute of Architects A+ Member Fellow and A+ Practice  
Registered Architect, NSW Architects Registration Board, NSW ARB 7150  
ArchiTeam Member  
Bachelor of Architecture-First Class Honours, UNSW, Sydney



# christopher polly architect

Nominated Architect: C Polly, ARB No. 7150  
17 Harold Street, Newtown NSW 2042 Australia  
+61 2 9516 5994  
mail@christopherpolly.com  
christopherpolly.com

## services

### 1. Sketch Design

The practice provides a full service of sketch design, design development, construction detail documentation, and construction period services for the best guarantee of a high quality outcome within the framework of a traditional procurement process from commencement of the project to its completion on site:

- / Understanding client requirements and aspirations.
- / Preliminary review and analysis of council planning policies pertaining to the site, site visit to enable an assessment of site opportunities & constraints, photographic survey of subject site & neighbouring conditions, site measure and preparation of measured plan drawings of existing conditions.
- / Management of delivery of, and co-ordination & integration of the work required from a separately client-appointed Surveyor.
- / Exploration & production of sketch design options and supporting information aligned to the brief to reach the preferred design, with drawings encompassing a level of detail suitable for preliminary cost estimates if needed.

### 2. Detailed Design / Development Application (DA)

- / Development of the preferred and client-approved design option, with revisions as needed, into the final design for a Development Application to council, with preparation of a range of numerous accompanying documents as required by council.
- / Management of any separately client-appointed consultants as needed by council, and co-coordination & integration of consultants' design work.
- / Completion of required forms and checklists, and obtainment of the client's approval of the final developed drawings & documents to proceed with lodgement of the DA.
- / Pre-application meeting if needed with council to facilitate obtaining approval.

### 3a. Construction Certificate (CC) Documentation

- / Development of DA documents into detailed plan, elevation and section drawings & specifications with accompanying schedules for a CC application to a separately client-appointed Private Certifier, meeting detail requirements of DA consent conditions in accordance with the Certifier's checklist.
- / Management of delivery of, and co-ordination & integration of the work required from separately client-appointed consultants to meet DA consent conditions.
- / Completion of all required forms and checklists, and obtainment of the client's approval of the final developed drawings and documents to proceed with lodgement of the Construction Certificate application.

### 3b. Construction Detail Documentation

- / Development of the approved CC into variously scaled detail construction drawings, schedules, specifications & accompanying documents.
- / Comprehensive client communications for selection of fixtures, fittings, equipment, and interior materials and finishes.
- / Reviews and mark-ups of ongoing preliminary drawing sets prepared by the previously appointed consultants (at CC) for management of delivery of their final work, and co-ordination & integration into the final architectural detail construction documentation.
- / Meetings with the client and completion of the client-approved final construction set of architectural and consultant's documents in readiness for tendering.

### 3c. Tendering

- / Investigations and vetting of suitable and available contractors via research and calls to contractors, with reporting of investigations to the client.
- / Preparation and production of all tender documents & forms in hard copy and electronic versions, and submission of complete tender packages to 3 selected tenderers and client, attendance of one tandem on-site meeting with each tenderer and the client.
- / Complete management of the tender process, responses to tender queries with information as needed, tabling and analysis assessments of submissions for clarifications, discussions with client and tenderers & tender negotiation period with one preferred tenderer with a view to their selection as the contractor.

### 4a. Construction Period: Contract Documentation & Contract Administration

- / Preparation of all Contract Documentation, with any revisions as required to the documentation following cost outcomes from negotiations with the preferred contractor, inclusive of the nominated contract, drawings and all other documentation into the final set of contract documents for signing by both the client and selected contractor, for an architect-administered contract over an assumed construction period.
- / Attendance at fortnightly site meetings, preparation of meeting minutes, and preparation of supplementary details and information to clarify the contract documents.
- / Complete administration of the contract between client & contractor to ensure design quality and workmanship are maintained & delivered throughout construction on site.
- / Complete financial management of the contract, documentation management, substitutions & variations management, further intermittent site visits as needed by the contractor and extensive off-site time as needed.

### 4b. Post Construction

- / Site visit and photographic record of defects and incomplete works once practical completion is reached.
- / Preparation of 1 defects list for defects and incomplete work to issue to the contractor under the contract provisions, with any further revised versions issued as needed.
- / Site visits to assess progressive completion of all defects as notified by the contractor, and assessment of the final contract account on completion of all defects work.

christopher polly architect

Nominated Architect: C Polly, ARB No. 7150  
17 Harold Street, Newtown NSW 2042 Australia  
+61 2 9516 5994  
mail@christopherpolly.com  
christopherpolly.com

projects / selected

13 - 18	<b>Binary House</b> - Woollooware Sydney / Gweagal Land Substantial additions and alterations to an original 1960’s freestanding yellow brick residence
13 - 16	<b>Unfurled House</b> - Petersham Sydney / Gadigal Land New two-storey addition and alterations to an existing Federation freestanding brick residence
19 - 20	<b>Greenwich House</b> - Greenwich Sydney / Cammeraygal Land New two-storey split-level house in response to its steeply sloping site, landscape setting and harbour views
16 - 18	<b>Flexion House</b> - Earlwood Sydney / Wangal Land New freestanding two-storey house with associated outdoor areas, pool and significant landscaping overlooking the Cooks River
21 -	<b>Blue Mountains House</b> - Mt Victoria, Blue Moutains NSW / Dharug and Gundungurra Land New modest off-grid house meeting design performance requirements within a high bushfire zone
23 -	<b>Leura House</b> - Leura, Blue Mountains NSW / Dharug and Gundungurra Land New house on a greenfield site comprising of a series of connected pavilions cascading down to a complex two-way slope from the highest elevation in Leura
23 -	<b>Trafalgar House</b> - Annandale NSW / Gadigal Land Substantial additions and sensitive alterations to an existing masonry 2 storey freestanding terrace house in a heitage conservation area
20 - 22	<b>National House</b> - Leichhardt Sydney / Wangal Land New two-storey sustainably modest house referencing its immediate context and the formal qualities of various compact housing types
09 - 13	<b>Cosgriff House</b> - Annandale Sydney / Gadigal Land Substantial additions and alterations to an existing brick 2 storey freestanding residence
07 - 11	<b>Elliott Ripper House</b> - Rozelle Sydney / Gadigal and Wangal Land Substantial additions and alterations to an existing sandstone and brick 2 storey freestanding residence
08 - 10	<b>Haines House</b> - Newtown Sydney / Gadigal Land Extensive additions and alterations to an existing semi-detached terrace
16 - 17	<b>Starling House</b> - Lilyfield Sydney / Wangal Land New freestanding two-storey house on a typically modest inner-suburban site
16 - 17	<b>Woonona House Studio</b> - Woonona NSW / Dharawal Land New house and studio spaces on a substantial property in the south coast town of Woonona
09 - 11	<b>Darling Point Penthouse</b> - Darling Point Sydney / Gadigal Land Substantial alterations and additions to an existing penthouse apartment
17 - 21	<b>Manifold House</b> - Dover Heights Sydney / Gadigal Land Significant first floor addition with alterations to an existing 1940’s freestanding brick residence
19 - 20	<b>Murrabin House</b> - Matraville Sydney / Gadigal Land New two-storey addition and substantial alterations to an existing 1956 brick residence with associated rear pool and cabana
15	<b>Formosa House</b> - Drummoyne, Sydney / Wangal Land Ground floor re-design and first floor addition to an existing Inter-War Federation semi-detached brick residence
11	<b>Newtown House</b> - Newtown Sydney / Gadigal Land Substantial additions and alterations to an existing 2 storey terrace
10	<b>Wintons Teak Showroom</b> - Artarmon Sydney / Cammeraygal Land New flagship showroom showcasing the company’s premium range of hand-crafted, solid teak outdoor furniture
08	<b>EyeOpener</b> - Sydney / Gadigal Land New flagship store fit-out including new display systems, joinery and signage
07	<b>Darlinghurst Retail &amp; Commercial</b> - Darlinghurst Sydney / Gadigal Land Two storey addition to existing 2 storey heritage listed commercial building and alterations and general refurbishment to the existing 2 stories
06 - 07	<b>Surry Hills Offices &amp; Showroom</b> - Surry Hills Sydney / Gadigal Land Two storey steel framed addition atop an existing 3 storey brick building on a prominent Foveaux St corner and adaptive re-use and upgrades to the existing premises



christopher polly architect

Nominated Architect: C Polly, ARB No. 7150  
17 Harold Street, Newtown NSW 2042 Australia  
+61 2 9516 5994  
mail@christopherpolly.com  
christopherpolly.com

publications / selected

20	<b>Daily Telegraph</b> , 10 October 2020 - “Top 50 Homes”, p.3 - <b>Binary House</b>
19	<b>Sydney Home Design + Living magazine</b> , Issue 9 - “Opposites Attract”, p.39 - <b>Binary House</b>
18	<b>Daily Telegraph, Home</b> , 17 November 2018 - “When the sky’s the limit”, pp.22-23 - <b>Binary House</b>
18	<b>Houses</b> , Issue 123 - “Binary House”, pp.118-123 - <b>Binary House</b>
18	<b>Domain magazine, Sydney Morning Herald</b> , 21 July 2018 - “Seeing value in good design”, p.9 - <b>Binary House</b>
18	<b>Good Weekend magazine</b> , 21 July 2018 - “Mezzo forte”, p.24 - <b>Binary House</b>
17	<b>Grand Designs Australia</b> , Issue 061 - “Architecture Shorts”, pp.43-44 - <b>Unfurled House</b>
16	<b>Green</b> , Issue 51 - “Simple Illusion”, pp.48-54 - <b>Unfurled House</b>
16	<b>Daily Telegraph, Home</b> , 20 August 2016 - “When the sky’s the limit”, pp.22-23 - <b>Unfurled House</b>
16	<b>Houses</b> , Issue 110 - “Unfurled House”, pp.76-83 - <b>Unfurled House</b>
16	<b>The Sun Herald, Domain / Amazing Design on Sunday</b> , 12 June 2016 - “Family opts for quality over quantity”, p.7 - <b>Unfurled House</b>
16	<b>Inner West Courier</b> , 24 May 2016 - “Couples’ ‘adventurous’ design scoops prize”, p.22 - <b>Unfurled House</b>
14	<b>Architectural Review Asia Pacific</b> , No.137, Residential Issue - “Cosgriff House”, pp.42-47 - <b>Cosgriff House</b>
14	<b>Inside Out</b> , July 2014 - “Back Extensions”, p.120-123 - featuring <b>Cosgriff House</b>
14	<b>(Inside) Interior Design Review</b> , No.81, May / June 2014 - “The Cosgriff House”, p.26 - <b>Cosgriff House</b>
14	<b>Green</b> , Issue 36 - “Modern Dugout”, pp.48-53 - <b>Cosgriff House</b>
14	<b>House &amp; Garden</b> , February 2014 - “Bright Sparks”, pp.80-87 - <b>Elliott Ripper House</b>
13	<b>Grand Designs (UK)</b> , October 2013 Issue - “Digging Deep”, p.20 - <b>Cosgriff House</b>
13	<b>The Sydney Morning Herald, Domain</b> , 28 September 2013 - “Modesty is best policy”, p.14 - <b>Elliott Ripper House</b>
13	<b>Belle</b> , August / September 2013 - “Right Now Architecture News - Vault Line”, p.46 - <b>Cosgriff House</b>
13	<b>Timber + Design International</b> , 2013 Vol.1 Issue 2 - “Memory Retention”, pp.9-13 - <b>Elliott Ripper House</b>
13	<b>The Sun Herald, Domain / From The Drawing Board</b> , 19 May 2013 - “Homes that hit the right notes”, p.40 - <b>Cosgriff House</b>
12	<b>Architectural Review Asia Pacific</b> , No.127, The Residential Issue - “One To Watch: Christopher Polly”, pp.28-32 - feature on <b>Christopher Polly</b>
12	<b>Monument</b> , Issue 111, The Residential Special - “Turning The Corner”, pp.56-61 - <b>Elliott Ripper House</b>
12	<b>Houses</b> , Issue 88 - “Elliott Ripper House”, pp.122-128 - <b>Elliott Ripper House</b>
12	<b>House &amp; Garden</b> , Issue 111, Collector’s Edition - “2012 Top 50 Rooms”, p.50 - <b>Haines House</b>
12	<b>The Sydney Morning Herald, Domain</b> , 14 April 2012 - “Sold on a size that fits all”, p.14 - <b>Elliott Ripper House</b>
12	<b>Daily Telegraph, Home</b> , 28 April 2012 - “Turning pokey into perfect”, pp.14-15 - <b>Darling Point Penthouse</b>
12	<b>Dwell</b> , February 2012 Issue - “Houses We Love - Back Storied”, p.36 - <b>Haines House</b>
12	<b>The Sydney Morning Herald, Domain</b> , 14 January 2012 - “New chapters in old storeys”, pp.4-5 - featuring <b>Darling Point Penthouse</b>
11	<b>Architectural Review Australia</b> , No.122 Residential 11 - “Haines House”, p.62 - <b>Haines House</b>
11	<b>Green</b> , Issue 21 - “Rear Window”, pp.50-56 - <b>Haines House</b>
11	<b>Houses</b> , Issue 81 - “Haines House”, pp.84-88 - <b>Haines House</b>



christopher polly architect

Nominated Architect: C Polly, ARB No. 7150  
17 Harold Street, Newtown NSW 2042 Australia  
+61 2 9516 5994  
mail@christopherpolly.com  
christopherpolly.com

online / selected

22	<b>The Local Project</b> , 23 June 2022 - “Design To Be Revered - Flexion House by Christopher Polly Architects” - <b>Flexion House</b>
22	<b>Dezeen</b> , 22 May 2022 - “Ten homes with spacious open-plan studies and workspaces” - <b>Unfurled House</b>
21	<b>Archello</b> , 19 November 2021 - “25 Best Architecture Firms in Sydney” - <b>Christopher Polly Architect</b>
19	<b>The Local Project</b> , 22 September 2019 - “A Hidden Addition - Unfurled House by Christopher Polly Architect” - <b>Unfurled House</b>
19	<b>Hunting For George</b> , 17 April 2019 - “Binary House   Christopher Polly Architect” - <b>Binary House</b>
19	<b>Australian Design Review</b> , 14 February 2019 - “Binary House: a contemporary extension to a 1960’s yellow brick house” - <b>Binary House</b>
19	<b>Hunting For George</b> , 30 January 2019 - “Christopher Polly   Meet the Architect” - <b>Christopher Polly Architect</b> feature
18	<b>The Design Files</b> , 15 November 2018 - “A Home With Two Personalities” - <b>Binary House</b>
18	<b>Lunchbox Architect</b> , 14 November 2018 - “Contrasting Addition Complements a Sixties Yellow Brick Home” - <b>Binary House</b>
18	<b>ArchitectureAU</b> , 6 November 2018 - “Unapologetically suburban: Binary House” - <b>Binary House</b>
18	<b>Habitus Living</b> , 8 October 2018 - “Hello Yellow Brick Home: Binary House By Christopher Polly Architect” - <b>Binary House</b>
18	<b>Dwell</b> , 2 October 2018 - “A Modest Midcentury Bungalow Takes on New Life in Sydney” - <b>Binary House</b>
18	<b>Design Milk</b> , 21 September 2018 - “A Bungalow in Sydney Gets a Dramatic, Pavilion-Like Addition” - <b>Binary House</b>
18	<b>Good Weekend</b> , 21 July 2018 - “Indoors: A Mezzanine? Things are looking up” - <b>Binary House</b>
16	<b>ArchitectureAU</b> , 15 September 2016 - “Dynamic expression: Unfurled House” - <b>Unfurled House</b>
16	<b>Habitus Living</b> , 21 July 2016 - “Unfurled House” - <b>Unfurled House</b>
16	<b>Design Milk</b> , 21 July 2016 - “Unfurled House by Christopher Polly Architect” - <b>Unfurled House</b>
16	<b>Designboom</b> , 19 July 2016 - “Unfurled House designed by Christopher Polly Architect for a Sydney family” - <b>Unfurled House</b>
16	<b>ArchDaily</b> , 7 July 2016 - “Unfurled House / Christopher Polly Architect” - <b>Unfurled House</b>
16	<b>Dezeen</b> , 6 July 2016 - “Wedge-shaped reading and sleeping nooks feature in Christopher Polly’s Sydney extension” - <b>Unfurled House</b>
16	<b>Domain / Amazing Design on Sunday</b> , 12 June 2016 - “Amazing Design: Don’t forget the garden” - <b>Unfurled House</b>
15	<b>Dwell</b> , 7 March 2015 - “Renovation Near Sydney Opens Home Onto a Lush Garden” - <b>Cosgriff House</b>
13	<b>Domus magazine online</b> , 24 May 2013 - “Christopher Polly: Cosgriff House” - <b>Cosgriff House</b>
13	<b>Fast Company / Co.Design</b> , 23 May 2013 - “Renovation On The Sly: Same Footprint, Twice The Volume” - <b>Cosgriff House</b>
13	<b>MARK</b> , 16 May 2013 - “Cosgriff House by Christopher Polly - A Clever Interplay Between Copy and Contrast” - <b>Cosgriff House</b>
13	<b>Dezeen</b> , 7 May 2013 - “Cosgriff House by Christopher Polly” - <b>Cosgriff House</b>
13	<b>Designboom</b> , 4 May 2013 - “Cosgriff House by Christopher Polly Architect” - <b>Cosgriff House</b>
13	<b>Dwell</b> , 7 February 2013 - “An Airy Renovation In Sydney” - <b>Elliott Ripper House</b>
12	<b>ArchitectureAU</b> , 18 December 2012 - “Elliott Ripper House” - <b>Elliott Ripper House</b>
12	<b>Habitus Living</b> , 10 October 2012 - “The Elliott Ripper House” - <b>Elliott Ripper House</b>
12	<b>Dwell</b> , 10 February 2012 - “Back Storied” - <b>Haines House</b>
11	<b>ArchitectureAU</b> , 24 September 2011 - “Haines House” - <b>Haines House</b>
11	<b>Habitus Living</b> , 10 February 2011 - “The Haines House” - <b>Haines House</b>



christopher polly architect

Nominated Architect: C Polly, ARB No. 7150  
17 Harold Street, Newtown NSW 2042 Australia  
+61 2 9516 5994  
mail@christopherpolly.com  
christopherpolly.com

awards

22	<b>Best of Houzz Awards 2022: Design</b> - Portfolio of projects - <b>Winner</b>
21	<b>Best of Houzz Awards 2021: Design</b> - Portfolio of projects - <b>Winner</b>
20	<b>Best of Houzz Awards 2020: Design</b> - Portfolio of projects - <b>Winner</b>
19	<b>Lysaght Inspirations Design Awards</b> - Binary House, Residential Projects - <b>Highly Commended</b>
19	<b>ArchDaily Building of the Year Awards</b> - Binary House, Houses Award - <b>Nonimation</b>
18	<b>Houses Awards</b> - Binary House, House Alteration & Addition over 200 sqm - <b>Shortlisted Finalist</b>
18	<b>Australian Timber Design Awards</b> - Binary House, Interior Fitout - Residential - <b>Shortlisted Finalist</b>
17	<b>Architizer A+ Awards</b> - Unfurled House, Residential Interiors Award (Typology Category) - <b>Shortlisted Finalist</b>
16	<b>Australian Institute of Architects Awards</b> - Unfurled House, Residential - Houses (Alterations & Additions) - <b>Winner</b>
16	<b>Marrickville Medal Award</b> - Unfurled House - <b>Winner</b>
16	<b>Interior Design Excellence Awards (IDEA)</b> - Unfurled House, Residential Single Award - <b>Shortlisted Finalist</b>
16	<b>Sustainability Awards</b> - Unfurled House, Single Dwelling (Alterations & Additions) Award - <b>Shortlisted Finalist</b>
16	<b>Houses Awards</b> - Unfurled House, House Alteration & Addition under 200 sqm - <b>Shortlisted Finalist</b>
16	<b>Australian Interior Design Awards</b> - Unfurled House, Residential Design Award - <b>Shortlisted Finalist</b>
16	<b>Marrickville Sustainable Building Award</b> - Unfurled House - <b>Shortlisted Finalist</b>
15	<b>Best of Houzz Awards 2015: Design</b> - Portfolio of projects - <b>Winner</b>
14	<b>Architizer A+ Awards</b> - Cosgriff House, Residential Interiors Award (Typology Category) - <b>Shortlisted Finalist</b>
13	<b>Sustainability Awards</b> - Cosgriff House, Single Dwelling (Alterations & Additions) Award - <b>Shortlisted Finalist</b>
13	<b>Australian Institute of Architects Awards</b> - Elliott Ripper House, Residential - Houses Alterations & Additions - <b>Shortlisted</b>
13	<b>Houses Awards</b> - Cosgriff House, House Alteration & Addition under 200 sqm - <b>Shortlisted Finalist</b>
13	<b>Australian Interior Design Awards</b> - Cosgriff House, Residential Design Award - <b>Shortlisted Finalist</b>
12	<b>Interior Design Excellence Awards (IDEA)</b> - Elliott Ripper House, Single Residential Award - <b>Shortlisted Finalist</b>
12	<b>House &amp; Garden Top 50 Room of the Year Awards</b> - Haines House - <b>Shortlisted Finalist</b>
12	<b>Australian Timber Design Awards</b> - Elliott Ripper House, Treated Pine Award - <b>Shortlisted Finalist</b>
11	<b>Houses Awards</b> - Haines House, House Alteration & Addition under 200 sqm - <b>Shortlisted Finalist</b>
11	<b>Interior Design Excellence Awards (IDEA)</b> - Haines House, Single Residential Award - <b>Shortlisted Finalist</b>
09	<b>Interior Design Excellence Awards (IDEA)</b> - EyeOpener, Retail Design Award - <b>Shortlisted Finalist</b>
09	<b>Australian Interior Design Awards</b> - EyeOpener, Retail Design Award - <b>Shortlisted Finalist</b>
09	<b>Dulux Colour Awards</b> - EyeOpener, Commercial Interiors Award - <b>Shortlisted Finalist</b>



# christopher polly architect

Nominated Architect: C Polly, ARB No. 7150  
17 Harold Street, Newtown NSW 2042 Australia  
+61 2 9516 5994  
mail@christopherpolly.com  
christopherpolly.com

A crafted volume is carefully connected to the retained and refashioned rear of an original 1960's brick dwelling to enact clear planning, cost and environmental values in an articulated binary composition of spatial and material opposites - a cellular and private front with an extant yellow brick character, and a voluminous and public rear with a singular grey metal expression in counterpoint.

The retained bungalow responsibly preserves the embodied energy of its original footprint while contributing to meeting a low budget and allowing the mid-century form of its suburban type to be retained within its locality. The two-storey pavilion provides a volumetrically expansive double-height living area, and serves as a generously proportioned 'garden room' with large apertures capturing sky and landscape views.



## Binary House Woollooware Sydney / Gweagal Land

2013 - 2018

- 2019 Lysaght Inspirations Design Awards - Highly Commended
- 2019 ArchDaily Building of the Year Awards - Nomination
- 2018 Houses Awards - Shortlisted Finalist
- 2018 Australian Timber Design Awards - Shortlisted Finalist





# christopher polly architect

Nominated Architect: C Polly, ARB No. 7150  
17 Harold Street, Newtown NSW 2042 Australia  
+61 2 9516 5994  
mail@christopherpolly.com  
christopherpolly.com

## Testimonial: Jeremy Farrington & Jasmin Ellis

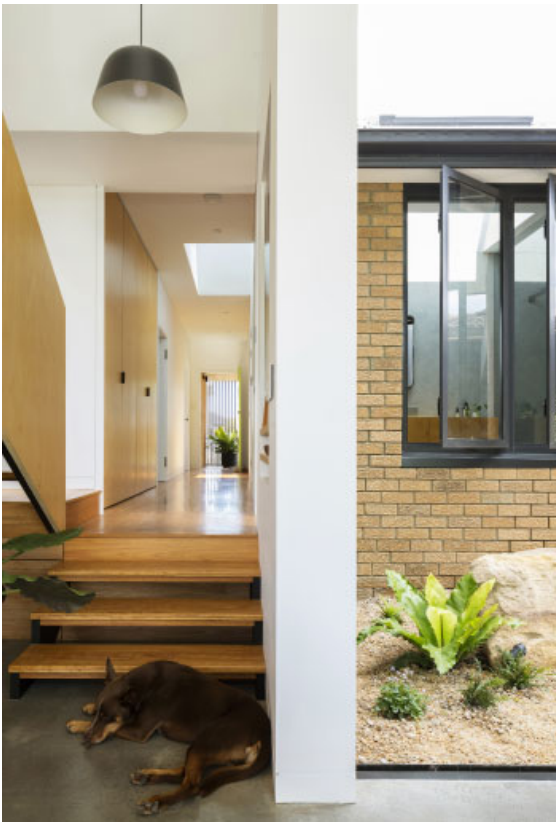
*Chris has been an integral part of our 4+ year journey in turning our 1960's modest brick house into something that discreetly improved the understated original character from the street while opening it up into an amazing contemporary new addition which provides perfect living spaces in which to enjoy our time.*  
*Chris has an amazing level of attention to detail and focus that was carried across all elements of our build to help drive the result of our amazing light-filled addition. He has brought his vast product knowledge to ensure the finishes were exactly what we wanted for a great architectural outcome inside and out.*  
*Chris' passion shows through in all elements of his work and phases of the project and for that we are sincerely thankful.*



## Binary House Woollooware Sydney / Gweagal Land

2013 - 2018

- 2019 Lysaght Inspirations Design Awards - Highly Commended
- 2019 ArchDaily Building of the Year Awards - Nomination
- 2018 Houses Awards - Shortlisted Finalist
- 2018 Australian Timber Design Awards - Shortlisted Finalist





# christopher polly architect

Nominated Architect: C Polly, ARB No. 7150  
17 Harold Street, Newtown NSW 2042 Australia  
+61 2 9516 5994  
mail@christopherpolly.com  
christopherpolly.com

An articulated two-storey volume is sensitively stitched to the rear fabric of a Federation house envelope to provide significant additional freedom for the owners and their children to grow into. It has a sectional split-level relationship to the original house that harnesses the fall of the site to the rear, allowing the cellular front plan to unfurl into a series of connected interior spaces that expand to its setting.

The built form & its program resolution respond to its immediate setting and the established conditions of the original dwelling. The new volume mediates the scale and massing of its larger and smaller neighbours, with the existing southern setback extrapolated to the extent of the southern neighbours' rear setback. Projecting 'wedges' at the rear further unfurl the envelope to meet specific programmatic requirements.



## Unfurled House Petersham Sydney / Gadigal Land

2013 - 2016

- 2016 AIA Awards, Residential Architecture, Houses (Alterations & Additions) - Architecture Award Winner
- 2016 Marrickville Medal Award - Winner
- 2017 Architizer A+ Awards - Shortlisted Finalist
- 2016 Sustainability Awards - Shortlisted Finalist
- 2016 IDEA Awards - Shortlisted Finalist
- 2016 Houses Awards - Shortlisted Finalist
- 2016 Australian Interior Design Awards - Shortlisted Finalist
- 2016 Marrickville Sustainable Building Award - Shortlisted Finalist





christopher polly architect

Nominated Architect: C Polly, ARB No. 7150  
17 Harold Street, Newtown NSW 2042 Australia  
+61 2 9516 5994  
mail@christopherpolly.com  
christopherpolly.com

Testimonial: Warrick Goldsmith

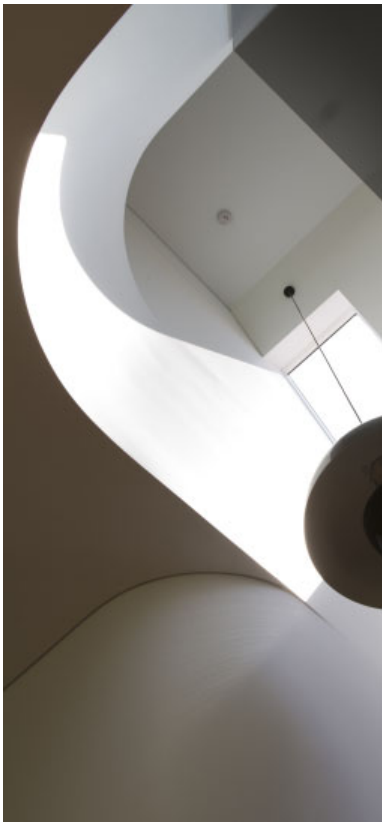
*We engaged Chris to design a renovation on our house after seeing his previous work. Particularly, his spectacular Elliott Ripper House in Sydney's Rozelle. Throughout the entire process from design to completion of construction, Chris has acted in the most professional manner of any person I've ever met. His talent for architecture & rigorous attention to detail is exemplary. The resulting product has been beyond our wildest expectations. For anyone with a passion for good design, I couldn't recommend Chris highly enough for engagement in their project.*



Unfurled House  
Petersham Sydney /  
Gadigal Land

2013 - 2016

- 2016 AIA Awards, Residential Architecture, Houses (Alterations & Additions) - Architecture Award Winner
- 2016 Marrickville Medal Award - Winner
- 2017 Architizer A+ Awards - Shortlisted Finalist
- 2016 Sustainability Awards - Shortlisted Finalist
- 2016 IDEA Awards - Shortlisted Finalist
- 2016 Houses Awards - Shortlisted Finalist
- 2016 Australian Interior Design Awards - Shortlisted Finalist
- 2016 Marrickville Sustainable Building Award - Shortlisted Finalist





christopher polly architect

Nominated Architect: C Polly, ARB No. 7150  
17 Harold Street, Newtown NSW 2042 Australia  
+61 2 9516 5994  
mail@christopherpolly.com  
christopherpolly.com

A new two-storey split-level house on a harbour site cascades a series of private & public rooms in response to its steeply sloping site, landscape setting, and water views. It provides crafted interpenetrations of space and light across its multiple half-levels, and offers a multi-generational model in its spatial organisation to enable room for a growing family of four with permanent accommodation for the owner's parents.

Its formal geometry is expressed as two distinct volumes separated by an open courtyard along the northern edge, and bridged by a glazed stair circulation zone for access to light, ventilation and divergent interior views at the centre of the house. An 'up-ticked' rear and several considered pop-out projections in the roof and wall planes expand the envelope to allow enhanced connections from various spaces to sky and views.



Greenwich House  
Greenwich Sydney /  
Cammeraygal Land

2019 - 2020





christopher polly architect

Nominated Architect: C Polly, ARB No. 7150  
17 Harold Street, Newtown NSW 2042 Australia  
+61 2 9516 5994  
mail@christopherpolly.com  
christopherpolly.com



Greenwich House  
Greenwich Sydney /  
Cammeraygal Land

2019 - 2020





christopher polly architect

Nominated Architect: C Polly, ARB No. 7150  
17 Harold Street, Newtown NSW 2042 Australia  
+61 2 9516 5994  
mail@christopherpolly.com  
christopherpolly.com

Flexion House is a new two-storey residence located at the end of a cul-de-sac on an expansive site overlooking adjacent parklands and the Cooks River. Its uniquely crafted form bends, extends and shifts in response to the shape of the site, program of rooms, and views to the river and adjacent landscape.

It incorporates white brickwork, blackbutt timber boards of varying width arrangements, black fine steel elements and expansive aluminium framed glazing for strong connections to outdoor spaces and its setting. A layering of dark bronze metal mesh pivoting screens enable activation and engagement of the rear composition along the riverbank, temper shifting direct light to the rear upper floor, and modulate privacy to balcony & living spaces from an immediate neighbour and riverside walkers & cyclists alike.



Flexion House  
Earlwood Sydney /  
Wangal Land

2016 - 2018





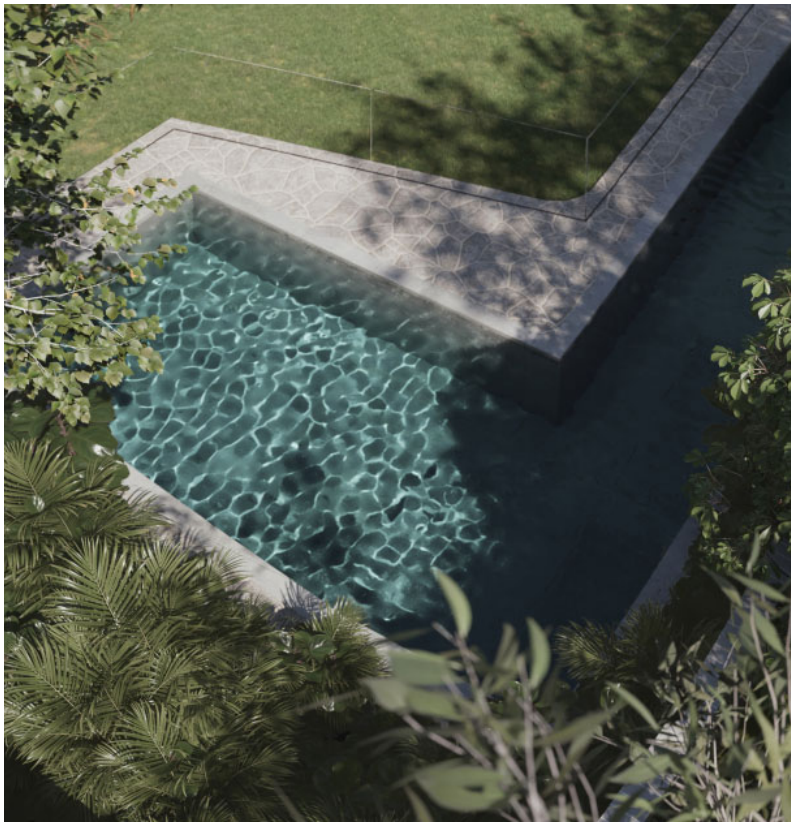
christopher polly architect

Nominated Architect: C Polly, ARB No. 7150  
17 Harold Street, Newtown NSW 2042 Australia  
+61 2 9516 5994  
mail@christopherpolly.com  
christopherpolly.com



Flexion House  
Earlwood Sydney /  
Wangal Land

2016 - 2018





christopher polly architect

Nominated Architect: C Polly, ARB No. 7150  
17 Harold Street, Newtown NSW 2042 Australia  
+61 2 9516 5994  
mail@christopherpolly.com  
christopherpolly.com

National House is a new modestly sized two-storey skinny house for a young family of four. The design makes geometric and elemental references to the neighbouring development of its immediate context while also alluding to the formal qualities of various compact housing types in Japanese, Dutch and Belgian inner urban neighbourhoods.

Its exterior is predominantly articulated by a 'jacket' of charred timber cladding, black aluminium glazed doors & windows, black metal hoods, and black standing seam metal roofing for a restrained and singular external expression in counterpoint to its neighbours. Internally, a composition of certified ash timber walls and joinery, black steel, terracotta, and ground floor burnished concrete create a series of warm and pared-back spaces.



National House  
Leichhardt Sydney /  
Wangal Land

2020 - 2022





christopher polly architect

Nominated Architect: C Polly, ARB No. 7150  
17 Harold Street, Newtown NSW 2042 Australia  
+61 2 9516 5994  
mail@christopherpolly.com  
christopherpolly.com

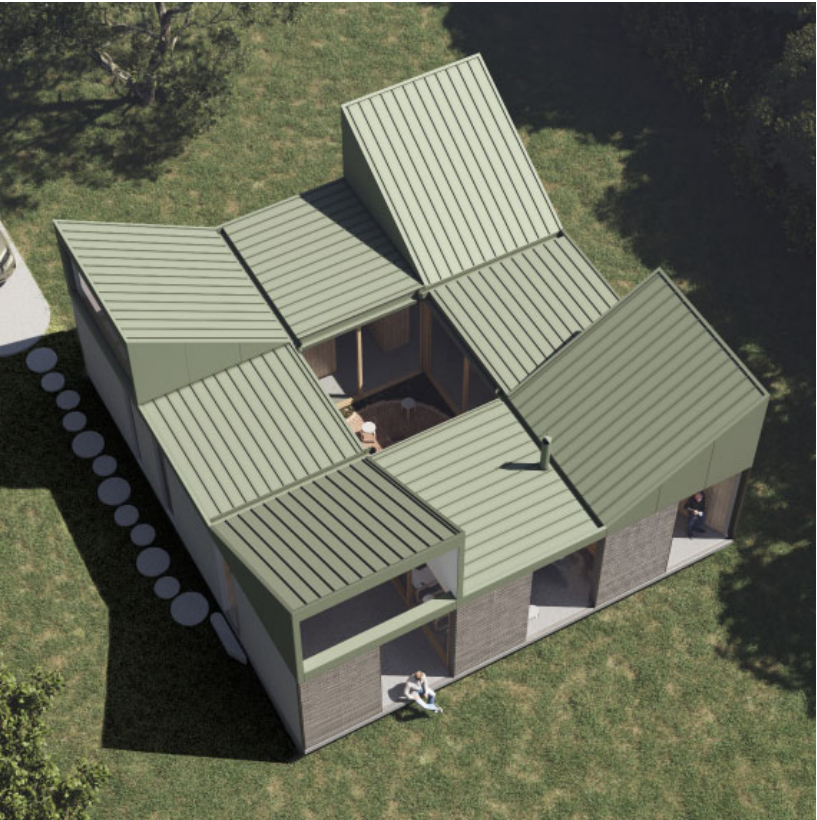
A new off-grid house is based on a 4m x 3.8m structural grid and pin-wheels a series of private and public rooms around a central courtyard to provide a modest internal floor area of 100 sqm with a low environmental footprint of only 129 sqm on site. Pop-up roofs at each corner amplify the pin-wheel to offer expanded volumes and varying connections to tree canopies and sky views.

It incorporates robust and durable materials to meet the design performance required of a BAL FZ high bushfire attack level, inclusive of a fire-proof concrete base, low carbon fibre-cement panels, pre-finished metal cladding, and fire-rated thermally efficient double glazing. External horizontally-sliding metal mesh screens and vertically-retractable motorised screens provide fire barriers, allowing its entire envelope to be fully 'shut down' when unoccupied.



Blue Mountains House  
Mt Victoria, Blue Mountains NSW /  
Dharug and Gundungurra Land

2021 -





# christopher polly architect

Nominated Architect: C Polly, ARB No. 7150  
17 Harold Street, Newtown NSW 2042 Australia  
+61 2 9516 5994  
mail@christopherpolly.com  
christopherpolly.com

A new house on a greenfield site comprises of a series of brick pavilions which cascade down a highly complex two-way slope from the highest elevation in Leura. It is carefully sited & anchored to its land in the manner in which it negotiates and relates to existing surrounding levels to provide proximate connections to its encompassing landscape, while simultaneously emerging from its topography to amply capture daylight, air circulation, and commanding views of the Blue Mountains National Park to the north.

It embodies a durable interior & exterior material language comprising of low carbon burnished concrete, face brickwork, galvanised steel, and naturally finished timber ceilings, doors, windows and joinery - while referencing the tones of its immediate landscape to allow a contiguous relationship with its surrounding setting.



## Leura House

Leura, Blue Mountains NSW /  
Dharug and Gundungurra Land

2023 -



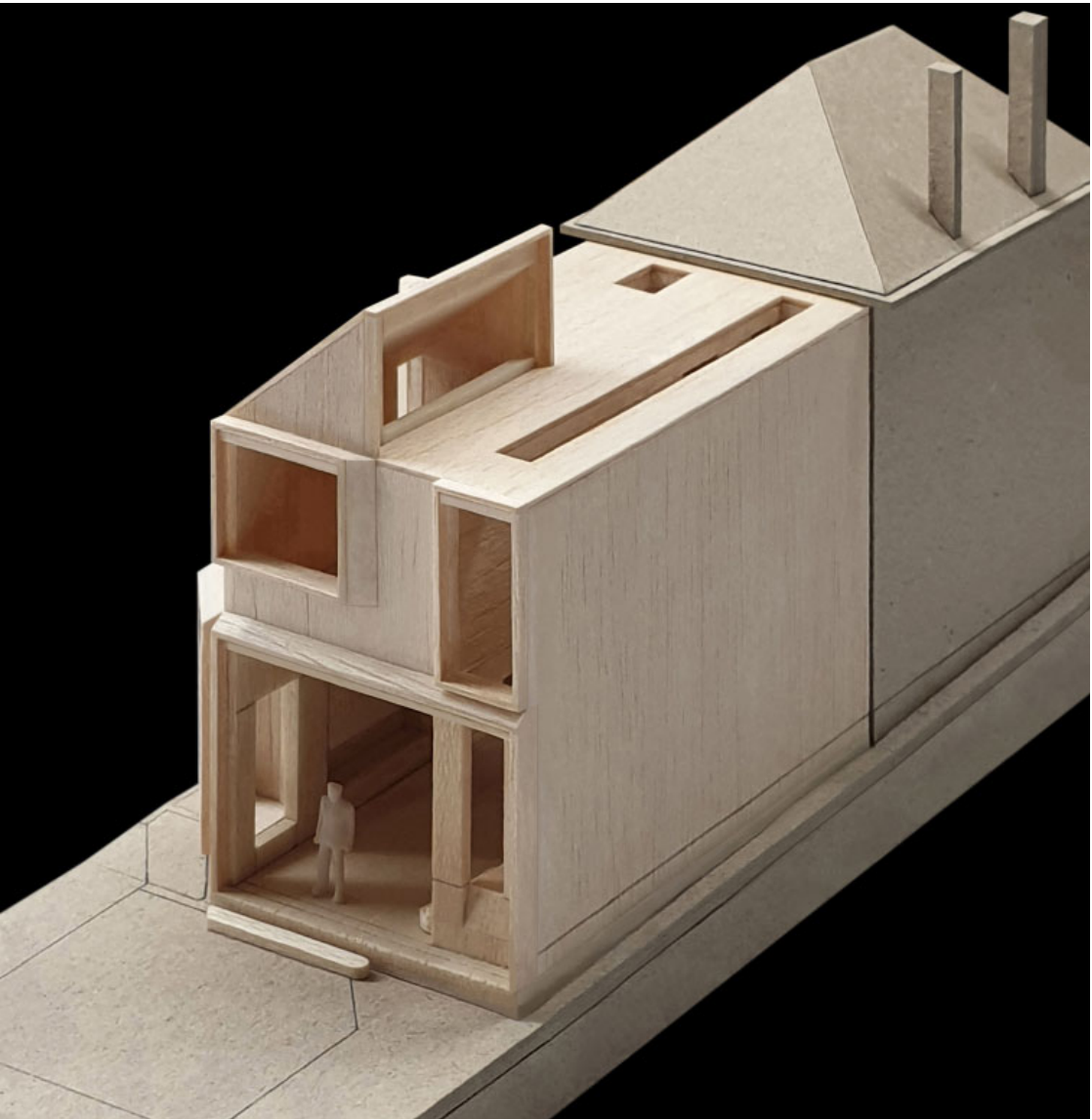


# christopher polly architect

Nominated Architect: C Polly, ARB No. 7150  
17 Harold Street, Newtown NSW 2042 Australia  
+61 2 9516 5994  
mail@christopherpolly.com  
christopherpolly.com

Sensitive alterations and a new rear addition to a freestanding house in a heritage conservation area are carefully composed to provide significant additional room for a growing family. The front primary form will be sympathetically restored and refurbished to enhance its historic character, while the form of the new addition purposely defers to established conditions of the original house in the manner in which it is sub-ordinate to and springs from it - at a macro level and in contemporaneous interpretation of particular elements and details.

A four-metre high rear 'grand room' provides a generosity of volume for kitchen, dining, and living areas which directly expand to a landscaped courtyard garden, while an adaptable original front room, and new bedroom, bathroom and laundry spaces will vastly improve its amenity.



## Trafalgar House

Annandale Sydney /  
Gadigal Land

2023 -





# christopher polly architect

Nominated Architect: C Polly, ARB No. 7150  
17 Harold Street, Newtown NSW 2042 Australia  
+61 2 9516 5994  
mail@christopherpolly.com  
christopherpolly.com

The project presents an appropriately simple and direct extrapolation of an existing archetypal form within a sustainably modest footprint. It provides an expanded series of connected interior volumes that harness access to sunlight, ventilation and strengthened links to tree canopies and sky, with extension of key existing materials & finishes to retain some memory of its previous incarnation.

Two living spaces reflect contemporary patterns of use to enable separation of adult and children functions when required. The ground floor area provides a 'day' space for meals preparation, dining and expansive enjoyment of rear gardens, while the upper living room provides an 'evening' space for relaxation, separation from utilities and enjoyment of district views - with an adaptable third bedroom providing flexibility for future use as a study.



## Elliott Ripper House Rozelle Sydney / Gadigal and Wangal Land

2007 - 2011

- 2013 AIA Awards, Residential Architecture, Houses (Alterations & Additions) - Shortlisted Finalist
- 2012 IDEA Awards - Shortlisted Finalist
- 2012 Australian Timber Design Awards - Shortlisted Finalist





# christopher polly architect

Nominated Architect: C Polly, ARB No. 7150  
17 Harold Street, Newtown NSW 2042 Australia  
+61 2 9516 5994  
mail@christopherpolly.com  
christopherpolly.com

## Testimonial: Megan Ripper

*We engaged Chris to design and project manage a large scale extension and renovation to our house and couldn't have been happier with the end result. Chris was able to come up with some fantastic ideas that gelled well with the aesthetic we'd hoped to achieve, and the little details he was able to incorporate really took the project to a level beyond expectations. Chris is incredibly professional to deal with, and aside from his great ideas and an eye for detail, we were impressed with the way he was able to run the tender process and manage our appointed builders throughout the project. The result? A project that came in on time and budget, and a house we love spending every minute in! Chris deserved all of the nominations and print media exposure our house received once completed. We wouldn't hesitate to use Chris again on a future project and have reommended him to others.*



## Elliott Ripper House Rozelle Sydney / Gadigal and Wangal Land

2007 - 2011

- 2013 AIA Awards, Residential Architecture, Houses (Alterations & Additions) - Shortlisted Finalist
- 2012 IDEA Awards - Shortlisted Finalist
- 2012 Australian Timber Design Awards - Shortlisted Finalist





christopher polly architect

Nominated Architect: C Polly, ARB No. 7150  
17 Harold Street, Newtown NSW 2042 Australia  
+61 2 9516 5994  
mail@christopherpolly.com  
christopherpolly.com

A substantial lower ground level is sensitively inserted under the retained original envelope to harness the significant fall in the site towards the rear and to achieve environmental sustainability objectives. It extends deeply beneath the existing dwelling and outwards towards the garden to transform it - while a re-crafted rear ground floor above enfolds the existing rhythm of front rooms over the new lower ground below.

A modestly-sized lightweight addition extends and subverts existing geometries to present an interpreted mirrored slice of the original vernacular form and palette attached to the retained rear. An eccentric roof form mirrors the original southern roof plane and twice folds upwards to eastern light and Jacaranda views at the rear, and to northern light and sky through a large fire-rated window along the long boundary.



Cosgriff House  
Annandale Sydney /  
Gadigal Land

2009 - 2013

- 2014 Architizer A+ Awards - Shortlisted Finalist
- 2013 Sustainability Awards - Shortlisted Finalist
- 2013 Houses Awards - Shortlisted Finalist
- 2013 Australian Interior Design Awards - Shortlisted Finalist





# christopher polly architect

Nominated Architect: C Polly, ARB No. 7150  
17 Harold Street, Newtown NSW 2042 Australia  
+61 2 9516 5994  
mail@christopherpolly.com  
christopherpolly.com

## Testimonial: Georgina Cosgriff

*We engaged Christopher Polly Architect to design and manage the renovation of our two bedroom home. Chris had a positive “can-do” attitude and an extremely creative vision. He made full use of our sloping site to create a wonderful four bedroom family home which accommodated council’s strict development controls. Chris was also able to incorporate our love of the garden and, in particular, a huge jacaranda tree into the design. Chris has a very professional attitude and his thoroughness in the design process meant that we had very little difficulty during the DA stage. Chris also managed the build and ensured that the finished project met his high expectations. Chris is attentive and very open with communication. We would have no hesitation in recommending Christopher Polly Architect.*



## Cosgriff House Annandale Sydney / Gadigal Land

2009 - 2013

- 2014 Architizer A+ Awards - Shortlisted Finalist
- 2013 Sustainability Awards - Shortlisted Finalist
- 2013 Houses Awards - Shortlisted Finalist
- 2013 Australian Interior Design Awards - Shortlisted Finalist





christopher polly architect

Nominated Architect: C Polly, ARB No. 7150  
17 Harold Street, Newtown NSW 2042 Australia  
+61 2 9516 5994  
mail@christopherpolly.com  
christopherpolly.com

The project for a young family entails a new two-storey house on an inner-suburban site. Its formal composition to the street and rear is a uniquely crafted and direct response to setback and building height plane controls. It offers a model for densification of a compact site to enable room for not only a growing family, yet a multi-generational proposition for increasingly extended stays of the owner’s parents.

A thin front facade is extruded in section to the centre of the plan and pinched-in at this point to provide a covered second entry, expanding to a greater width at the rear for an asymmetric gable-end form inventively accommodating the client’s brief over both levels. The wider rear half incorporates battens over upper level glazing, while retractable exterior blinds housed within steel plate assemblies shade lower glazing.



Starling House  
Lilyfield Sydney /  
Wangal Land

2016 - 2017





christopher polly architect

Nominated Architect: C Polly, ARB No. 7150  
17 Harold Street, Newtown NSW 2042 Australia  
+61 2 9516 5994  
mail@christopherpolly.com  
christopherpolly.com

The project for a young family of four presents a model for grafting a singular substantial volume to an existing single storey semi-detached dwelling while capturing an existing centrally located bathroom within the new volume, enabling old and new fabric to enmesh a unique spatial sequence along the length of the dwelling and provide for two separate living spaces.

An arrangement of fine steel plate supports and highlight windows march along the entire low roof, bridging the high and low roofs and wrapping to the rear to enable access to natural ventilation, views to neighbouring landscapes, sky and natural light from somewhat challenged eastern and southern orientations - while pocket-concealed sliding doors extend the living spaces onto a roofed terrace that directly connects to the enclosed private garden beyond.



Haines House  
Newtown Sydney /  
Gadigal Land

2008 - 2010

- 2012 H&G Room of the Year Awards - Shortlisted Finalist
- 2011 Houses Awards - Shortlisted Finalist
- 2011 IDEA Awards - Shortlisted Finalist





christopher polly architect

Nominated Architect: C Polly, ARB No. 7150  
17 Harold Street, Newtown NSW 2042 Australia  
+61 2 9516 5994  
mail@christopherpolly.com  
christopherpolly.com

Testimonial: Georgia Haines

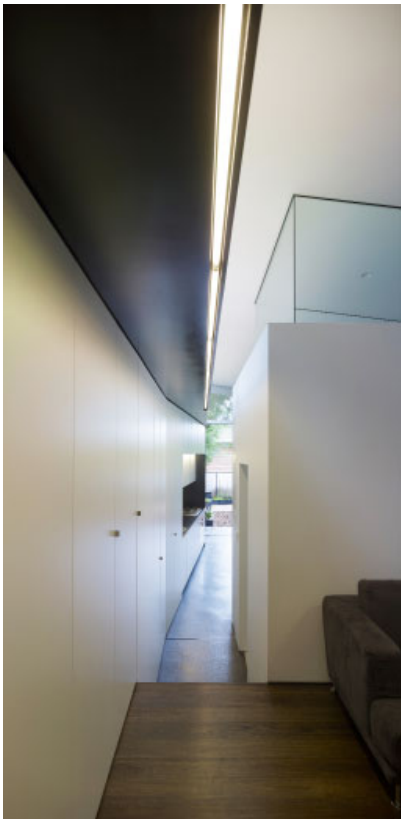
*I hired Christopher Polly to design and project manage the renovation of my single story semi in Newtown. Chris worked very well with my brief and created an addition that was elegant, nuanced and suited to my needs. He was honest with me and managed my expectations well. He managed all aspects of council approval and tender preparation. His talent for thoughtful design is matched by his attention to detail and keen desire to maintain the integrity of the design throughout the build. His instinct for builder selection was spot on and the resultant home has done me in good stead for many years now. I would highly recommend him to anyone.*



Haines House  
Newtown Sydney /  
Gadigal Land

2008 - 2010

- 2012 H&G Room of the Year Awards - Shortlisted Finalist
- 2011 Houses Awards - Shortlisted Finalist
- 2011 IDEA Awards - Shortlisted Finalist



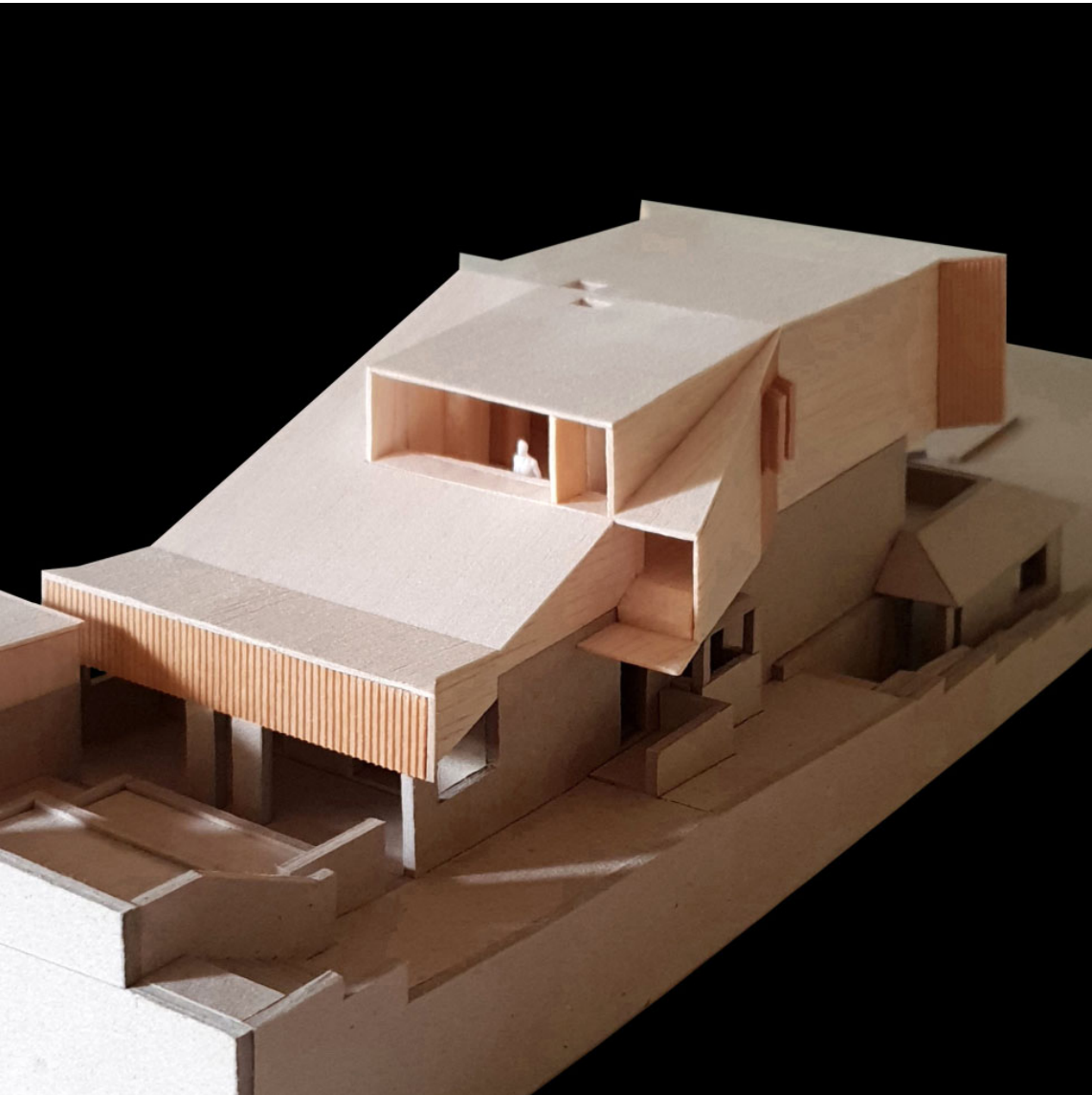


# christopher polly architect

Nominated Architect: C Polly, ARB No. 7150  
17 Harold Street, Newtown NSW 2042 Australia  
+61 2 9516 5994  
mail@christopherpolly.com  
christopherpolly.com

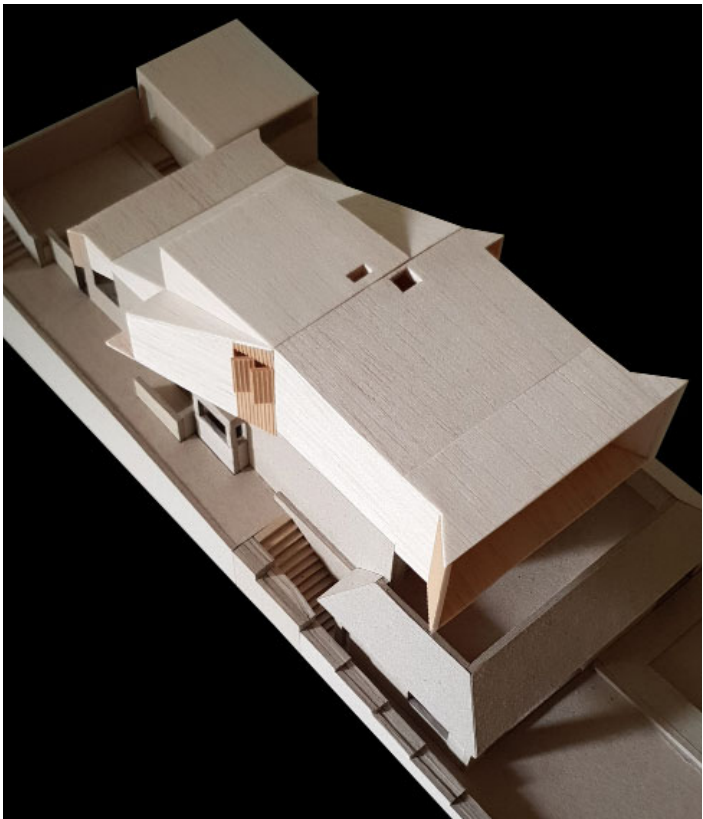
Manifold House entails a significant addition and alterations to an existing house in Dover Heights. A new first floor envelope provides additional living, sitting, bedroom and bathroom spaces and negotiates a series of challenging existing conditions beneath it to craft a multifocal response to its place which better engages with the street, connects to an opposite parkland reserve at the front, and directs views to the harbour and city skyline at the rear.

Its folded form captures the existing front ground floor porch to provide external shelter and enhanced light to the existing front bedrooms, springing upwards to form the new upper floor and then outwards in a rear cantilvered balcony with wedge-like folds amplifying views to the city and harbour - while also providing covered shelter to the existing ground floor terrace below.



## Manifold House Dover Heights Sydney / Gadigal Land

2017 - 2021





# christopher polly architect

Nominated Architect: C Polly, ARB No. 7150  
17 Harold Street, Newtown NSW 2042 Australia  
+61 2 9516 5994  
mail@christopherpolly.com  
christopherpolly.com

The project involves a new house and studio spaces for a sea-changing artist couple on a substantial yet narrow remnant site in the NSW south coast town of Woonona. It draws upon the typology of farmhouses that were prevalent in the area during early 19th century settlement of the town, embracing utilitarian qualities in construction methods and materials.

Unlike the built pattern of the surrounding context, the proposal comprises of a small 103 sqm plan that is organised into simply demarcated public and private zones within a low saw-tooth roof arrangement to achieve an environmentally sustainable objective of 'compactness' which prioritises quality over quantity. It allows a generosity of volume to living, working and sleeping spaces, and establishes strong physical and visual connections to its place.



## Woonona House Studio Woonona NSW / Dharawal Land

2016 - 2017





# christopher polly architect

Nominated Architect: C Polly, ARB No. 7150  
17 Harold Street, Newtown NSW 2042 Australia  
+61 2 9516 5994  
mail@christopherpolly.com  
christopherpolly.com

The project is located within the Easthaven building designed by Ancher Mortlock & Murray in the late 1950's. It embeds mechanisms of expansion, contraction and adaptability of space across the length and depth of a previously determined post-war plan layout, to offer a variety of unique spatial configurations.

Its arrangement was resolved around an existing central service core, existing utilities locations and retained columns & slab core holes. A long north-south joinery device was employed as a means of unifying disparate wall alignments along the entire length of the apartment, simultaneously serving as the key threshold between public and private areas. Its planar quality is punctuated by pivoting panels, recesses and apertures that lead to a reconfigured private domain of rooms, enlarged bathroom and kitchen respectively.



## Darling Point Penthouse

Darling Point Sydney /  
Gadigal Land

2009 - 2011





# christopher polly architect

Nominated Architect: C Polly, ARB No. 7150  
17 Harold Street, Newtown NSW 2042 Australia  
+61 2 9516 5994  
mail@christopherpolly.com  
christopherpolly.com

## Testimonial: Sue-Ella Prodonovich

*Christopher Polly Architect provided architectural design services including defining and developing concepts; providing full design & documentation services; preparation of permits / applications and liaison with relevant regulatory authorities, community / strata management groups, councils and certifiers; and overall project and contract management. His design and expertise covered everything from the specification of the number on the front door, precision cabinetry that provided storage and defined spaces, outstanding lighting solutions, clever use of woodwork inside and out, and an innovative solution for the external terrace surface. The level of detail covered in his documentation ensured there were no surprises and the project ran smoothly. The suppliers he used (builder, engineers) were all reputable and responsive. Our experience was first class and exemplified the value an architect brings to a project.*



## Darling Point Penthouse

Darling Point Sydney /  
Gadigal Land

2009 - 2011





christopher polly architect

Nominated Architect: C Polly, ARB No. 7150  
17 Harold Street, Newtown NSW 2042 Australia  
+61 2 9516 5994  
mail@christopherpolly.com  
christopherpolly.com

The flagship store responds to its specific urban location within the established high-end retail character of the street, providing a high quality spatial experience for the presentation of optical products that overcomes its spatial limitations and modest budget.

It involved a restrained monochromatic palette of materials and finishes - black rubber flooring, framed full height mirrors, white painted columns, white opal resin shelves and white polyurethane finishes for the desk, rear workbench, sunglasses display and storage units. A multicoloured striped wall marks the location of the eye testing room beyond, for visual interest to the rear of the store. It draws an abstract analogy with the visible spectrum that is refracted when light passes through an optical prism, to provide a nod to the clinical nature of the function being housed within.



EyeOpener  
Sydney /  
Gadigal Land

2008

- 2009 IDEA Awards - Shortlisted Finalist
- 2009 Australian Interior Design Awards - Shortlisted Finalist (Retail Design)
- 2009 Australian Interior Design Awards - Shortlisted Finalist (Colour Commercial)
- 2009 Dulux Colour Awards - Shortlisted Finalist





christopher polly architect

Nominated Architect: C Polly, ARB No. 7150  
17 Harold Street, Newtown NSW 2042 Australia  
+61 2 9516 5994  
mail@christopherpolly.com  
christopherpolly.com

The flagship showroom provides a high quality experience for the presentation of the Wintons Teak premium range of hand crafted solid teak outdoor furniture. A restrained palette of materials has been employed and specific colours selected from the existing brand identity for front-of-house maximum focus of displayed products, while a back-of-house area meets specific requirements for services, deliveries, storage and assembly.

The insertion of a series of floating back-lit white paneled walls and white shelf units reinforce the rhythm of the existing columned-bays and provide maximum foregrounding of displayed products. This marching linearity is further emphasised by long lines of suspended lighting tubes drawing the eye through to the rear, to culminate in a freestanding carved counter module and backdrop focus of a rear wall lined in astro turf.



Wintons Teak Showroom

Artarmon Sydney /  
Camberaygal Land

2010

