

christopher polly architect

Nominated Architect: C Polly, ARB No. 7150
17 Harold Street, Newtown NSW 2042 Australia
+61 2 9516 5994
mail@christopherpolly.com
www.christopherpolly.com



christopher polly architect

Nominated Architect: C Polly, ARB No. 7150
17 Harold Street, Newtown NSW 2042 Australia
+61 2 9516 5994
mail@christopherpolly.com
www.christopherpolly.com

profile

Christopher Polly Architect

Christopher Polly Architect is an award-winning full service architecture practice established by Christopher Polly in Sydney in late 2005. It engages with clients who share in the reward of accomplishing bold visions to enrich their daily lives, who prioritise quality over quantity, and who place value in achieving inventive and well crafted spaces that are meticulously detailed and finished.

The practice distils a holistic detail design approach in the delivery of highly creative and pragmatic architectural solutions that resonate conceptual rigour and a command of materials and systems. A strong emphasis is placed on a critical synthesis of the opportunities and constraints of each site, context and client brief for the creation of uniquely appropriate and sustainable outcomes in response to place, landscape and patterns of use.

The practice has been widely published locally and internationally, and has garnered a reputation for delivering design excellence on often complex sites. It has extensive experience across varied scales and building types and provides highly personalised architectural services to clients engaged in all stages of each project - underscored by solid working relationships with consultants and builders. Projects encompass new houses, additions and alterations to existing houses, and boutique retail, restaurant and workplace environments.

director

Christopher Polly

Christopher Polly is a registered architect who was educated at the University of New South Wales, graduating in 1997 with Class 1 Honours, the *Australian Institute of Architects NSW Chapter Prize* (best in state) and the *Frank Fox Memorial Prize* for his thesis on the urban design of Battery Park City in New York.

Prior to establishing private practice, he held a senior position with Tzannes Associates and previously worked within the practice of Candalepas Associates. He has presented works in tours and talks, has been a juror for University of Technology final architecture studio presentations and was a selected juror for the 2017 AIA NSW Architecture Awards for Residential Architecture-Houses (New and Alterations & Additions).

Memberships, Qualifications & Education

Australian Institute of Architects A+ Member Fellow and A+ Practice
Registered Architect, NSW Architects Registration Board, NSW ARB 7150
ArchiTeam Member
Bachelor of Architecture-First Class Honours, UNSW, Sydney

christopher polly architect

Nominated Architect: C Polly, ARB No. 7150
17 Harold Street, Newtown NSW 2042 Australia
+61 2 9516 5994
mail@christopherpolly.com
www.christopherpolly.com

services

1. Sketch Design

The practice provides a full service of sketch design, design development, construction detail documentation, and construction period services for the best guarantee of a high quality outcome within the framework of a traditional procurement process from commencement of the project to its completion on site:

- / Understanding client requirements and aspirations.
- / Preliminary review and analysis of council planning policies pertaining to the site, site visit to enable an assessment of site opportunities & constraints, photographic survey of subject site & neighbouring conditions, site measure and preparation of measured plan drawings of existing conditions.
- / Management of delivery of, and co-ordination & integration of the work required from a separately client-appointed Surveyor.
- / Exploration & production of sketch design options and supporting information aligned to the brief to reach the preferred design, with drawings encompassing a level of detail suitable for preliminary cost estimates if needed.

2. Detailed Design / Development Application (DA)

- / Development of the preferred and client-approved design option, with revisions as needed, into the final design for a Development Application to council, with preparation of a range of numerous accompanying documents as required by council.
- / Management of any separately client-appointed consultants as needed by council, and co-ordination & integration of consultants' design work.
- / Completion of required forms and checklists, and obtainment of the client's approval of the final developed drawings & documents to proceed with lodgement of the DA.
- / Pre-application meeting if needed with council to facilitate obtaining approval.

3a. Construction Certificate (CC) Documentation

- / Development of DA documents into detailed plan, elevation and section drawings & specifications with accompanying schedules for a CC application to a separately client-appointed Private Certifier, meeting detail requirements of DA consent conditions in accordance with the Certifier's checklist.
- / Management of delivery of, and co-ordination & integration of the work required from separately client-appointed consultants to meet DA consent conditions.
- / Completion of all required forms and checklists, and obtainment of the client's approval of the final developed drawings and documents to proceed with lodgement of the Construction Certificate application.

3b. Construction Detail Documentation

- / Development of the approved CC into variously scaled detail construction drawings, schedules, specifications & accompanying documents.
- / Comprehensive client communications for selection of fixtures, fittings, equipment, and interior materials and finishes.
- / Reviews and mark-ups of ongoing preliminary drawing sets prepared by the previously appointed consultants (at CC) for management of delivery of their final work, and co-ordination & integration into the final architectural detail construction documentation.
- / Meetings with the client and completion of the client approved final construction set of architectural, structural and hydraulic documents in readiness for tendering.

3c. Tendering

- / Investigations and vetting of suitable and available contractors via research and calls to contractors, with reporting of investigations to the client.
- / Preparation and production of all tender documents & forms in hard copy and electronic versions, and submission of complete tender packages to 3 selected tenderers and client, attendance of one tandem on-site meeting with each tenderer and the client.
- / Complete management of the tender process, responses to tender queries with information as needed, tabling and analysis assessments of submissions for clarifications, discussions with client and tenderers & tender negotiation period with one preferred tenderer with a view to their selection as the contractor.

4a. Construction Period: Contract Documentation & Contract Administration

- / Preparation of all Contract Documentation, with any revisions as required to the documentation following cost outcomes from negotiations with the preferred contractor, inclusive of the nominated contract, drawings and all other documentation into the final set of contract documents for signing by both the client and selected contractor, for a traditional lump sum architect-administered contract over an assumed construction period.
- / Attendance at fortnightly site meetings, preparation of meeting minutes, and preparation of supplementary details and information to clarify the contract documents.
- / Complete administration of the contract between client & contractor to ensure design quality and workmanship are maintained & delivered throughout construction on site.
- / Complete financial management of the contract, documentation management, substitutions & variations management, further intermittent site visits as needed by the contractor and extensive off-site time as needed.

4b. Post Construction

- / Site visit and photographic record of defects and incomplete works once practical completion is reached.
- / Preparation of 1 defects list for defects and incomplete work to issue to the contractor under the contract provisions, with any further revised versions issued as needed.
- / Site visits to assess progressive completion of all defects as notified by contractor, and assessment of the final contract account on completion of all defects work.

christopher polly architect

Nominated Architect: C Polly, ARB No. 7150
17 Harold Street, Newtown NSW 2042 Australia
+61 2 9516 5994
mail@christopherpolly.com
www.christopherpolly.com

projects / selected

13 - 18	Binary House - Woollooware Sydney Substantial additions and alterations to original 1960's freestanding yellow brick residence
13 - 16	Unfurled House - Petersham Sydney New two-storey addition and alterations to existing Federation freestanding brick residence
09 - 13	Cosgriff House - Annandale Sydney Substantial additions and alterations to existing brick 2 storey freestanding residence
07 - 11	Elliott Ripper House - Rozelle Sydney Substantial additions and alterations to existing sandstone and brick 2 storey freestanding residence
08 - 10	Haines House - Newtown Sydney Extensive additions and alterations to existing semi-detached terrace
09 - 11	Darling Point Penthouse - Darling Point Sydney Substantial alterations and additions to existing penthouse apartment
20 -	Choi Jacobs House - Leichhardt Sydney New two-storey sustainably modest house referencing its immediate context and the formal qualities of various compact housing types
19 -	Greenwich House - Greenwich Sydney New two-storey split-level house in response to its steeply sloping site, landscape setting and harbour views
19 -	Matrville House - Matrville Sydney New two-storey addition and substantial alterations to existing 1956 brick residence with associated rear pool and cabana
17 -	Manifold House - Dover Heights Sydney Significant first floor addition with alterations to existing 1940's freestanding brick residence
16 - 18	Flexion House - Earlwood Sydney New freestanding two-storey house with associated outdoor areas, pool and significant landscaping overlooking the Cooks River
16 - 17	Liu Eland House - Lilyfield Sydney New freestanding two-storey house on a typically modest inner-suburban site
16 - 17	Woonona House Studio - Woonona NSW New house and studio spaces on a substantial yet narrow property in the south coast town of Woonona
15	Haoui House - Drummoyne, Sydney Ground floor re-design and first floor addition to an existing Inter-War Federation semi-detached brick residence
11	Newtown House - Newtown Sydney Substantial additions and alterations to existing 2 storey terrace
10	Wintons Teak Showroom - 1 Frederick Street, Artarmon Sydney New flagship showroom showcasing the company's premium range of hand-crafted, solid teak outdoor furniture
08	EyeOpener - 74 Castlereagh Street, Sydney New flagship store fit-out including new display systems, joinery and signage
05 - 07	Golden Harbour Restaurant - 31-33 Dixon Street, Haymarket Sydney Refurbishment to front half of restaurant, new shopfront, new external awning and shading devices and general refurbishment to remaining restaurant
05 - 07	Hird Behan House - Newtown Sydney Additions and alterations to existing 2 storey, 3 bed detached terrace
07	Darlinghurst Retail & Commercial - 165 Riley Street, Darlinghurst Sydney Two storey addition to existing 2 storey heritage listed commercial building and alterations and general refurbishment to the existing 2 stories
06	Surry Hills Offices & Showroom - 86 Foveaux Street, Surry Hills Sydney Two storey addition to existing 3 storey commercial building and alterations and general refurbishment to the existing premises
05	Food @ The Overflow - Overflow Park, Homebush Sydney New food precinct for the Sydney Olympic Park Authority, including 34 specialty shops, adjoining dining areas and 50 market stalls along a market street

christopher polly architect

Nominated Architect: C Polly, ARB No. 7150
17 Harold Street, Newtown NSW 2042 Australia
+61 2 9516 5994
mail@christopherpolly.com
www.christopherpolly.com

publications / selected

20	Daily Telegraph , 10 October 2020 - "Top 50 Homes", p.3 - Binary House
19	Sydney Home Design + Living magazine , Issue 9 - "Opposites Attract", p.39 - Binary House
18	Daily Telegraph, Home , 17 November 2018 - "When the sky's the limit", pp.22-23 - Binary House
18	Houses , Issue 123 - "Binary House", pp.118-123 - Binary House
18	Domain magazine, Sydney Morning Herald , 21 July 2018 - "Seeing value in good design", p.9 - Binary House
18	Good Weekend magazine , 21 July 2018 - "Mezzo forte", p.24 - Binary House
17	Grand Designs Australia , Issue 061 - "Architecture Shorts", pp.43-44 - Unfurled House
16	Green , Issue 51 - "Simple Illusion", pp.48-54 - Unfurled House
16	Daily Telegraph, Home , 20 August 2016 - "When the sky's the limit", pp.22-23 - Unfurled House
16	Houses , Issue 110 - "Unfurled House", pp.76-83 - Unfurled House
16	The Sun Herald, Domain / Amazing Design on Sunday , 12 June 2016 - "Family opts for quality over quantity", p.7 - Unfurled House
16	Inner West Courier , 24 May 2016 - "Couples' 'adventurous' design scoops prize", p.22 - Unfurled House
14	Architectural Review Asia Pacific , No.137, Residential Issue - "Cosgriff House", pp.42-47 - Cosgriff House
14	Inside Out , July 2014 - "Back Extensions", p.120-123 - featuring Cosgriff House
14	(Inside) Interior Design Review , No.81, May / June 2014 - "The Cosgriff House", p.26 - Cosgriff House
14	Green , Issue 36 - "Modern Dugout", pp.48-53 - Cosgriff House
14	House & Garden , February 2014 - "Bright Sparks", pp.80-87 - Elliott Ripper House
13	Grand Designs (UK) , October 2013 Issue - "Digging Deep", p.20 - Cosgriff House
13	The Sydney Morning Herald, Domain , 28 September 2013 - "Modesty is best policy", p.14 - Elliott Ripper House
13	Renovate , Vol.9 No.3 Issue - "New Life", pp.44-53 - Elliott Ripper House
13	Belle , August / September 2013 - "Right Now Architecture News - Vault Line", p.46 - Cosgriff House
13	Scoop, Kitchens & Bathrooms 2013 , Edition 7 - "Australian Style - Lightplay", p.70 - Cosgriff House Bathroom
13	Timber + Design International , 2013 Vol.1 Issue 2 - "Memory Retention", pp.9-13 - Elliott Ripper House
13	The Sun Herald, Domain / From The Drawing Board , 19 May 2013 - "Homes that hit the right notes", p.40 - Cosgriff House
12	Architectural Review Asia Pacific , No.127, The Residential Issue - "One To Watch: Christopher Polly", pp.28-32 - feature on Christopher Polly
12	Monument , Issue 111, The Residential Special - "Turning The Corner", pp.56-61 - Elliott Ripper House
12	Houses , Issue 88 - "Elliott Ripper House", pp.122-128 - Elliott Ripper House
12	House & Garden , Issue 111, Collector's Edition - "2012 Top 50 Rooms", p.50 - Haines House
12	Light Home , Issue 5, The Spring Issue - "Style and Substance", pp.22-28 - Christopher Polly Architect feature containing 3 residential projects
12	Renovate , Vol.8 No.2 Issue - "Changing Rooms", pp.62-71 - Darling Point Penthouse
12	The Sydney Morning Herald, Domain , 14 April 2012 - "Sold on a size that fits all", p.14 - Elliott Ripper House
12	Daily Telegraph, Home , 28 April 2012 - "Turning pokey into perfect", pp.14-15 - Darling Point Penthouse

christopher polly architect

Nominated Architect: C Polly, ARB No. 7150
17 Harold Street, Newtown NSW 2042 Australia
+61 2 9516 5994
mail@christopherpolly.com
www.christopherpolly.com

online / selected

- Dwell**, February 2012 Issue - "Houses We Love - Back Storied", p.36 - **Haines House**
- The Sydney Morning Herald, Domain**, 14 January 2012 - "New chapters in old storeys", pp.4-5 - featuring **Darling Point Penthouse**
- Architectural Review Australia**, No.122 Residential 11 - "Haines House", p.62 - **Haines House**
- Renovate**, Vol.7 No.4 Issue - "Let There Be Light", pp.88-93 - **Haines House**
- Arquitectura y Diseño (Spain)**, No.130 - "Espacios Flexibles", p.96 - **Haines House**
- Green**, Issue 21 - "Rear Window", pp.50-56 - **Haines House**
- Houses**, Issue 81 - "Haines House", pp.84-88 - **Haines House**
- Grand Designs (UK)**, June 2011 Issue - "Box of Tricks", p.21 - **Haines House**
- The Sydney Morning Herald, Domain**, 5 February 2011 - "On the light track", pp.10-11 - **Haines House**
- The Local Project**, 22 September 2019 - "A Hidden Addition - Unfurled House by Christopher Polly Architect" - **Unfurled House**
- Hunting For George**, 17 April 2019 - "Binary House | Christopher Polly Architect" - **Binary House**
- Australian Design Review**, 14 February 2019 - "Binary House: a contemporary extension to a 1960's yellow brick house" - **Binary House**
- Architecture & Design**, 13 February 2019 - "Binary House: Where spatial and material opposites meet" - **Binary House**
- Hunting For George**, 30 January 2019 - "Christopher Polly | Meet the Architect" - **Christopher Polly Architect** feature
- The Design Files**, 15 November 2018 - "A Home With Two Personalities" - **Binary House**
- Lunchbox Architect**, 14 November 2018 - "Contrasting Addition Complements a Sixties Yellow Brick Home" - **Binary House**
- ArchDaily**, 8 November 2018 - "Binary House / Christopher Polly Architect" - **Binary House**
- Contemporist**, 6 November 2018 - "A Black Rear Extension Was Added To A 1960s Brick House In Sydney" - **Binary House**
- ArchitectureAU**, 6 November 2018 - "Unapologetically suburban: Binary House" - **Binary House**
- Habitus Living**, 8 October 2018 - "Hello Yellow Brick Home: Binary House By Christopher Polly Architect" - **Binary House**
- Dwell**, 2 October 2018 - "A Modest Midcentury Bungalow Takes on New Life in Sydney" - **Binary House**
- Design Milk**, 21 September 2018 - "A Bungalow in Sydney Gets a Dramatic, Pavilion-Like Addition" - **Binary House**
- Domain / Innovation column**, 21 July 2018 - "Binary House: The asymmetrical beauty created on a stringent budget" - **Binary House**
- Good Weekend**, 21 July 2018 - "Indoors: A Mezzanine? Things are looking up" - **Binary House**
- ArchitectureAU**, 15 September 2016 - "Dynamic expression: Unfurled House" - **Unfurled House**
- Habitus Living**, 21 July 2016 - "Unfurled House" - **Unfurled House**
- Design Milk**, 21 July 2016 - "Unfurled House by Christopher Polly Architect" - **Unfurled House**
- e-architect**, 21 July 2016 - "Unfurled House in Petersham" - **Unfurled House**
- Designboom**, 19 July 2016 - "Unfurled House designed by Christopher Polly Architect for a Sydney family" - **Unfurled House**
- Architizer**, 19 July 2016 - "Unfurled House" - **Unfurled House**
- ArchDaily**, 7 July 2016 - "Unfurled House / Christopher Polly Architect" - **Unfurled House**
- Contemporist**, 6 July 2016 - "Christopher Polly designs an angular rear extension for this house in Sydney" - **Unfurled House**

christopher polly architect

Nominated Architect: C Polly, ARB No. 7150
17 Harold Street, Newtown NSW 2042 Australia
+612 9516 5994
mail@christopherpolly.com
www.christopherpolly.com

online / selected

16	Dezeen , 6 July 2016 - "Wedge-shaped reading and sleeping nooks feature in Christopher Polly's Sydney extension" - Unfurled House
16	Domain / Amazing Design on Sunday , 12 June 2016 - "Amazing Design: Don't forget the garden" - Unfurled House
16	Design Twins , 26 February 2016 - "Design chats with architect Christopher Polly" - Christopher Polly Architect feature
15	Dwell , 7 March 2015 - "Renovation Near Sydney Opens Home Onto a Lush Garden" - Cosgriff House
15	Australian Design Review , 28 January 2015 - "Cosgriff House, Sydney" - Cosgriff House
14	Interiors Addict , 7 July 2014 - "Interview: architect Christopher Polly" - Christopher Polly Architect feature
14	Inside Living , 13 June 2014 - "Cosgriff House by Christopher Polly Architect" - Cosgriff House
13	Domus magazine online , 24 May 2013 - "Christopher Polly: Cosgriff House" - Cosgriff House
13	Fast Company / Co.Design , 23 May 2013 - "Renovation On The Sly: Same Footprint, Twice The Volume" - Cosgriff House
13	Design Milk , 20 May 2013 - "Cosgriff House by Christopher Polly Architect" - Cosgriff House
13	MARK , 16 May 2013 - "Cosgriff House by Christopher Polly - A Clever Interplay Between Copy and Contrast" - Cosgriff House
13	Architizer , 15 May 2013 - "Cosgriff House" - Cosgriff House
13	ArchDaily , 13 May 2013 - "Cosgriff House / Christopher Polly Architect" - Cosgriff House
13	Contemporist , 11 May 2013 - "Cosgriff House by Christopher Polly Architect" - Cosgriff House
13	Dezeen , 7 May 2013 - "Cosgriff House by Christopher Polly" - Cosgriff House
13	Designboom , 4 May 2013 - "Cosgriff House by Christopher Polly Architect" - Cosgriff House
13	WAN Interiors News , 1 May 2013 - "Elliott Ripper House" - Elliott Ripper House
13	Dwell , 7 February 2013 - "An Airy Renovation In Sydney" - Elliott Ripper House
12	ArchitectureAU , 18 December 2012 - "Elliott Ripper House" - Elliott Ripper House
12	Architecture & Design , 15 November 2012 - "Profile: Christopher Polly and lightweight home design" - Christopher Polly feature
12	Habitus Living , 10 October 2012 - "The Elliott Ripper House" - Elliott Ripper House
12	ArchDaily , 12 April 2012 - "Elliott Ripper House / Christopher Polly Architect" - Elliott Ripper House
12	Contemporist , 12 April 2012 - "Elliott Ripper House by Christopher Polly Architect" - Elliott Ripper House
12	Dwell , 10 February 2012 - "Back Storied" - Haines House
11	ArchDaily , 14 October 2011 - "Darling Point Penthouse / Christopher Polly Architect" - Darling Point Penthouse
11	Freshome , 5 October 2011 - "Impressive Contemporary Penthouse Overlooking Sydney Harbour" - Darling Point Penthouse
11	Architizer , 26 September 2011 - "Darling Point Penthouse" - Darling Point Penthouse
11	ArchitectureAU , 24 September 2011 - "Haines House" - Haines House
11	Design Milk , 3 August 2011 - "Haines House by Christopher Polly" - Haines House
11	Habitus Living , 10 February 2011 - "The Haines House" - Haines House
11	Contemporist , 6 February 2011 - "Haines House by Christopher Polly Architect" - Haines House
11	ArchDaily , 23 January 2011 - "Haines House / Christopher Polly Architect" - Haines House

christopher polly architect

Nominated Architect: C Polly, ARB No. 7150
17 Harold Street, Newtown NSW 2042 Australia
+61 2 9516 5994
mail@christopherpolly.com
www.christopherpolly.com

awards

20	Best of Houzz Awards 2020: Design - Portfolio of projects - Winner
19	Lysaght Inspirations Design Awards - Binary House, Residential Projects - Highly Commended
19	ArchDaily Building of the Year Awards - Binary House, Houses Award - Nonimation
18	Houses Awards - Binary House, House Alteration & Addition over 200 sqm - Shortlisted Finalist
18	Australian Timber Design Awards - Binary House, Interior Fitout - Residential - Shortlisted Finalist
17	Architizer A+ Awards - Unfurled House, Residential Interiors Award (Typology Category) - Shortlisted Finalist
16	Australian Institute of Architects Awards - Unfurled House, Residential - Houses (Alterations & Additions) - Winner
16	Marrickville Medal Award - Unfurled House - Winner
16	Interior Design Excellence Awards (IDEA) - Unfurled House, Residential Single Award - Shortlisted Finalist
16	Sustainability Awards - Unfurled House, Single Dwelling (Alterations & Additions) Award - Shortlisted Finalist
16	Houses Awards - Unfurled House, House Alteration & Addition under 200 sqm - Shortlisted Finalist
16	Australian Interior Design Awards - Unfurled House, Residential Design Award - Shortlisted Finalist
16	Marrickville Sustainable Building Award - Unfurled House - Shortlisted Finalist
15	Best of Houzz Awards 2015: Design - Portfolio of projects - Winner
14	Architizer A+ Awards - Cosgriff House, Residential Interiors Award (Typology Category) - Shortlisted Finalist
13	Sustainability Awards - Cosgriff House, Single Dwelling (Alterations & Additions) Award - Shortlisted Finalist
13	Australian Institute of Architects Awards - Elliott Ripper House, Residential - Houses Alterations & Additions - Shortlisted
13	Houses Awards - Cosgriff House, House Alteration & Addition under 200 sqm - Shortlisted Finalist
13	Australian Interior Design Awards - Cosgriff House, Residential Design Award - Shortlisted Finalist
12	Interior Design Excellence Awards (IDEA) - Elliott Ripper House, Single Residential Award - Shortlisted Finalist
12	House & Garden Top 50 Room of the Year Awards - Haines House - Shortlisted Finalist
12	Australian Timber Design Awards - Elliott Ripper House, Treated Pine Award - Shortlisted Finalist
11	Houses Awards - Haines House, House Alteration & Addition under 200 sqm - Shortlisted Finalist
11	Interior Design Excellence Awards (IDEA) - Haines House, Single Residential Award - Shortlisted Finalist
09	Interior Design Excellence Awards (IDEA) - EyeOpener, Retail Design Award - Shortlisted Finalist
09	Australian Interior Design Awards - EyeOpener, Retail Design Award - Shortlisted Finalist
09	Dulux Colour Awards - EyeOpener, Commercial Interiors Award - Shortlisted Finalist

christopher polly architect

Nominated Architect: C Polly, ARB No. 7150
17 Harold Street, Newtown NSW 2042 Australia
+61 2 9516 5994
mail@christopherpolly.com
www.christopherpolly.com

Testimonial: Jeremy Farrington & Jasmin Ellis

Chris has been an integral part of our 4+ year journey in turning our 1960's modest brick house into something that discreetly improved the understated original character from the street while opening it up into an amazing contemporary new addition which provides perfect living spaces in which to enjoy our time.

Chris has an amazing level of attention to detail and focus that was carried across all elements of our build to help drive the result of our amazing light-filled addition. He has brought his vast product knowledge to ensure the finishes were exactly what we wanted for a great architectural outcome inside and out.

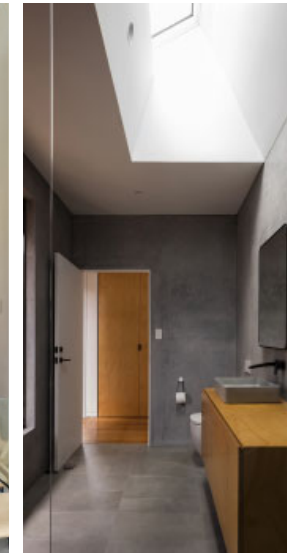
Chris' passion shows through in all elements of his work and phases of the project and for that we are sincerely thankful.



Binary House Woollooware Sydney

2013 - 2018

- 2019 Lysaght Inspirations Design Awards - *Highly Commended*
- 2019 ArchDaily Building of the Year Awards - *Nomination*
- 2018 Houses Awards - *Shortlisted Finalist*
- 2018 Australian Timber Design Awards - *Shortlisted Finalist*



christopher polly architect

Nominated Architect: C Polly, ARB No. 7150
17 Harold Street, Newtown NSW 2042 Australia
+61 2 9516 5994
mail@christopherpolly.com
www.christopherpolly.com



Binary House Woollooware Sydney

2013 - 2018

- 2019 Lysaght Inspirations Design Awards - *Highly Commended*
- 2019 ArchDaily Building of the Year Awards - *Nomination*
- 2018 Houses Awards - *Shortlisted Finalist*
- 2018 Australian Timber Design Awards - *Shortlisted Finalist*



christopher polly architect

Nominated Architect: C Polly, ARB No. 7150
17 Harold Street, Newtown NSW 2042 Australia
+61 2 9516 5994
mail@christopherpolly.com
www.christopherpolly.com

Testimonial: Warrick Goldsmith

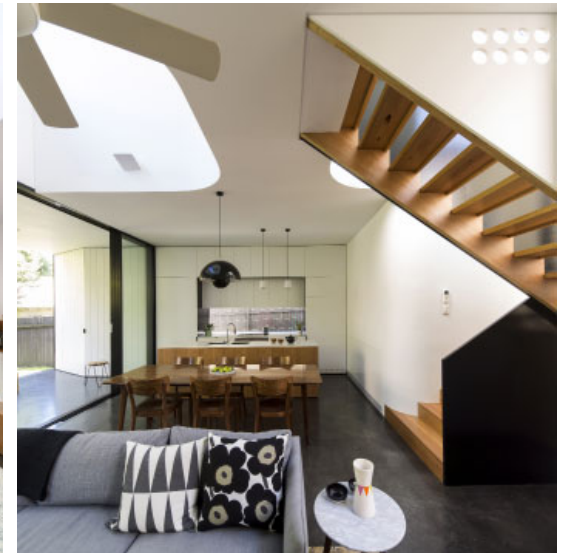
We engaged Chris to design a renovation on our house after seeing his previous work. Particularly, his spectacular Elliott Ripper House in Sydney's Rozelle. Throughout the entire process from design to completion of construction, Chris has acted in the most professional manner of any person I've ever met. His talent for architecture & rigorous attention to detail is exemplary. The resulting product has been beyond our wildest expectations. For anyone with a passion for good design, I couldn't recommend Chris highly enough for engagement in their project.



Unfurled House Petersham Sydney

2013 - 2016

- 2016 AIA Awards, Residential Architecture, Houses (Alterations & Additions) - *Architecture Award Winner*
- 2016 Marrickville Medal Award - *Winner*
- 2017 Architizer A+ Awards - *Shortlisted Finalist*
- 2016 Sustainability Awards - *Shortlisted Finalist*
- 2016 IDEA Awards - *Shortlisted Finalist*
- 2016 Houses Awards - *Shortlisted Finalist*
- 2016 Australian Interior Design Awards - *Shortlisted Finalist*
- 2016 Marrickville Sustainable Building Award - *Shortlisted Finalist*



christopher polly architect

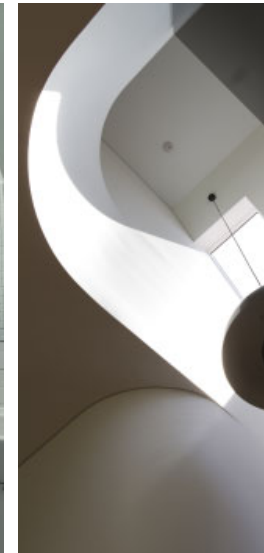
Nominated Architect: C Polly, ARB No. 7150
17 Harold Street, Newtown NSW 2042 Australia
+61 2 9516 5994
mail@christopherpolly.com
www.christopherpolly.com



Unfurled House Petersham Sydney

2013 - 2016

- 2016 AIA Awards, Residential Architecture, Houses (Alterations & Additions) - *Architecture Award Winner*
- 2016 Marrickville Medal Award - *Winner*
- 2017 Architizer A+ Awards - *Shortlisted Finalist*
- 2016 Sustainability Awards - *Shortlisted Finalist*
- 2016 IDEA Awards - *Shortlisted Finalist*
- 2016 Houses Awards - *Shortlisted Finalist*
- 2016 Australian Interior Design Awards - *Shortlisted Finalist*
- 2016 Marrickville Sustainable Building Award - *Shortlisted Finalist*



christopher polly architect

Nominated Architect: C Polly, ARB No. 7150
17 Harold Street, Newtown NSW 2042 Australia
+61 2 9516 5994
mail@christopherpolly.com
www.christopherpolly.com

Testimonial: Georgina Cosgriff

We engaged Christopher Polly Architect to design and manage the renovation of our two bedroom home. Chris had a positive "can-do" attitude and an extremely creative vision. He made full use of our sloping site to create a wonderful four bedroom family home which accommodated council's strict development controls.

Chris was also able to incorporate our love of the garden and, in particular, a huge jacaranda tree into the design. Chris has a very professional attitude and his thoroughness in the design process meant that we had very little difficulty during the DA stage.

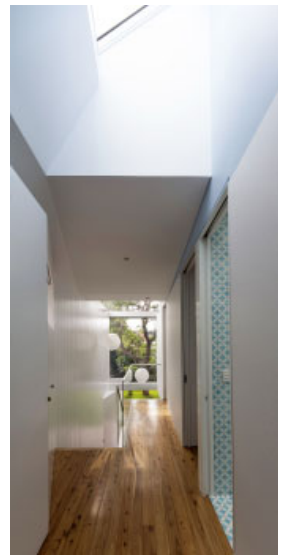
Chris also managed the build and ensured that the finished project met his high expectations. Chris is attentive and very open with communication. We would have no hesitation in recommending Christopher Polly Architect.



Cosgriff House Annandale Sydney

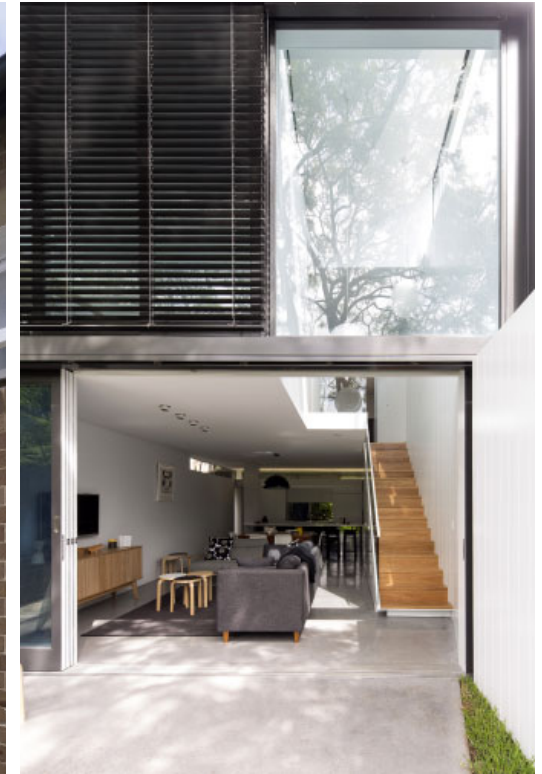
2009 - 2013

- 2014 Architizer A+ Awards - Shortlisted Finalist
- 2013 Sustainability Awards - Shortlisted Finalist
- 2013 Houses Awards - Shortlisted Finalist
- 2013 Australian Interior Design Awards - Shortlisted Finalist



christopher polly architect

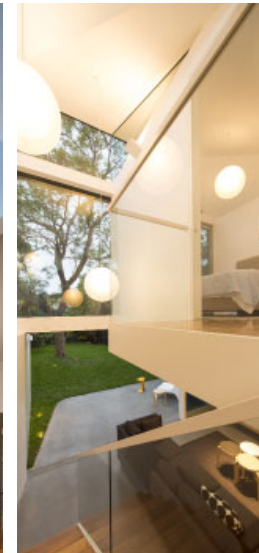
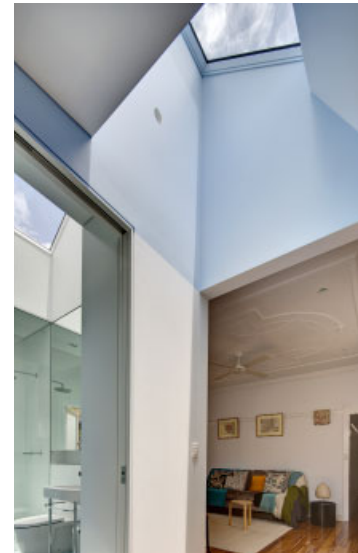
Nominated Architect: C Polly, ARB No. 7150
17 Harold Street, Newtown NSW 2042 Australia
+61 2 9516 5994
mail@christopherpolly.com
www.christopherpolly.com



Cosgriff House Annandale Sydney

2009 - 2013

- 2014 Architizer A+ Awards - Shortlisted Finalist
- 2013 Sustainability Awards - Shortlisted Finalist
- 2013 Houses Awards - Shortlisted Finalist
- 2013 Australian Interior Design Awards - Shortlisted Finalist

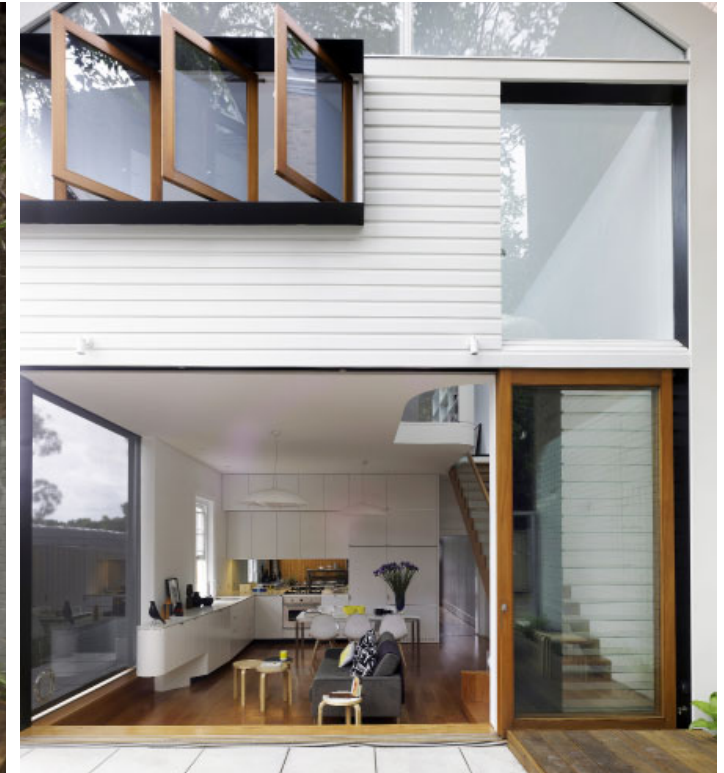


christopher polly architect

Nominated Architect: C Polly, ARB No. 7150
17 Harold Street, Newtown NSW 2042 Australia
+61 2 9516 5994
mail@christopherpolly.com
www.christopherpolly.com

Testimonial: Megan Ripper

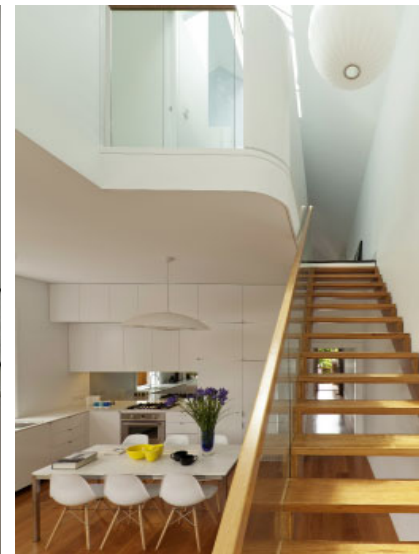
We engaged Chris to design and project manage a large scale extension and renovation to our house and couldn't have been happier with the end result. Chris was able to come up with some fantastic ideas that gelled well with the aesthetic we'd hoped to achieve, and the little details he was able to incorporate really took the project to a level beyond expectations. Chris is incredibly professional to deal with, and aside from his great ideas and an eye for detail, we were impressed with the way he was able to run the tender process and manage our appointed builders throughout the project. The result? A project that came in on time and budget, and a house we love spending every minute in! Chris deserved all of the nominations and print media exposure our house received once completed. We wouldn't hesitate to use Chris again on a future project and have recommended him to others.



Elliott Ripper House Rozelle Sydney

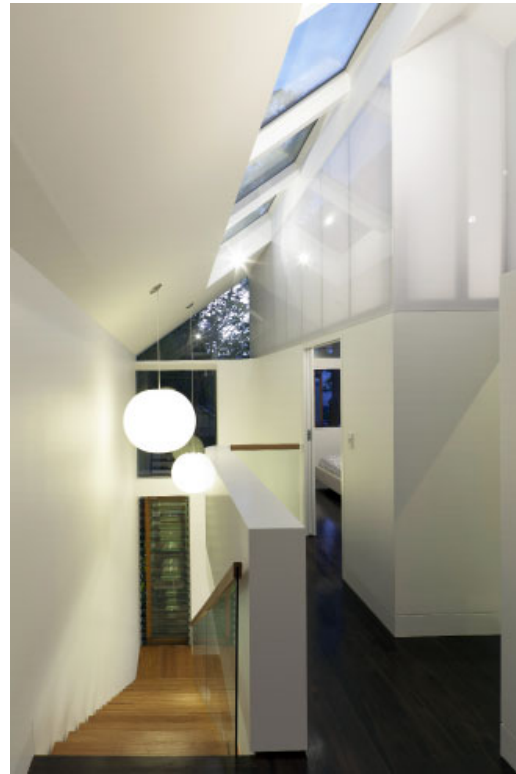
2007 - 2011

- 2013 AIA Awards, Residential Architecture, Houses (Alterations & Additions) - Shortlisted Finalist
- 2012 IDEA Awards - Shortlisted Finalist
- 2012 Australian Timber Design Awards - Shortlisted Finalist



christopher polly architect

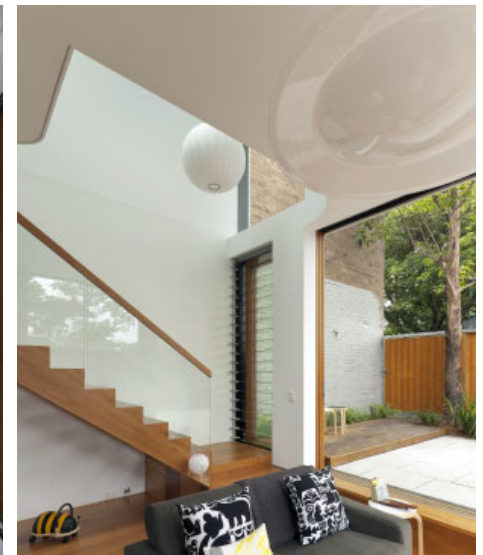
Nominated Architect: C Polly, ARB No. 7150
17 Harold Street, Newtown NSW 2042 Australia
+61 2 9516 5994
mail@christopherpolly.com
www.christopherpolly.com



Elliott Ripper House Rozelle Sydney

2007 - 2011

- 2013 AIA Awards, Residential Architecture, Houses (Alterations & Additions) - *Shortlisted Finalist*
- 2012 IDEA Awards - *Shortlisted Finalist*
- 2012 Australian Timber Design Awards - *Shortlisted Finalist*



christopher polly architect

Nominated Architect: C Polly, ARB No. 7150
17 Harold Street, Newtown NSW 2042 Australia
+61 2 9516 5994
mail@christopherpolly.com
www.christopherpolly.com

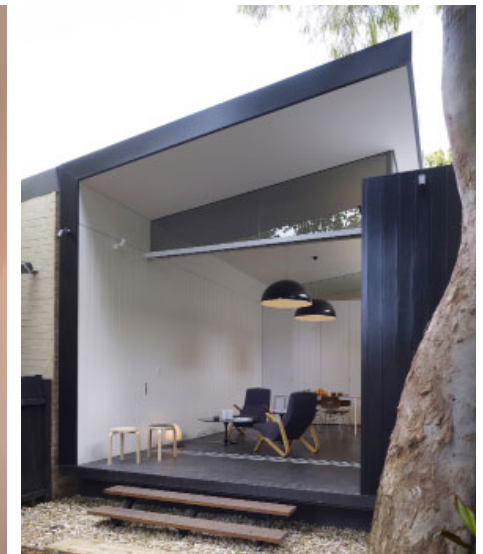
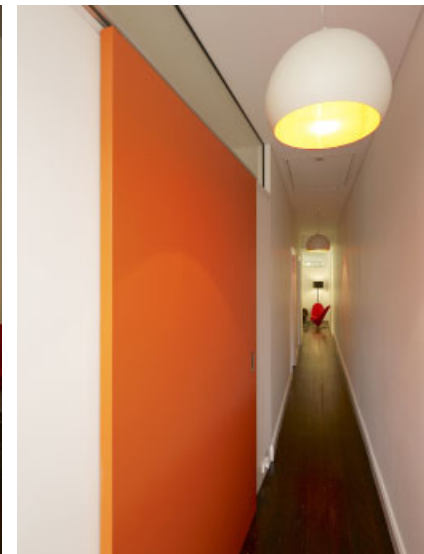
Testimonial: Georgia Haines

I hired Christopher Polly to design and project manage the renovation of my single story semi in Newtown. Chris worked very well with my brief and created an addition that was elegant, nuanced and suited to my needs. He was honest with me and managed my expectations well. He managed all aspects of council approval and tender preparation. His talent for thoughtful design is matched by his attention to detail and keen desire to maintain the integrity of the design throughout the build. His instinct for builder selection was spot on and the resultant home has done me in good stead for many years now. I would highly recommend him to anyone.

Haines House Newtown Sydney

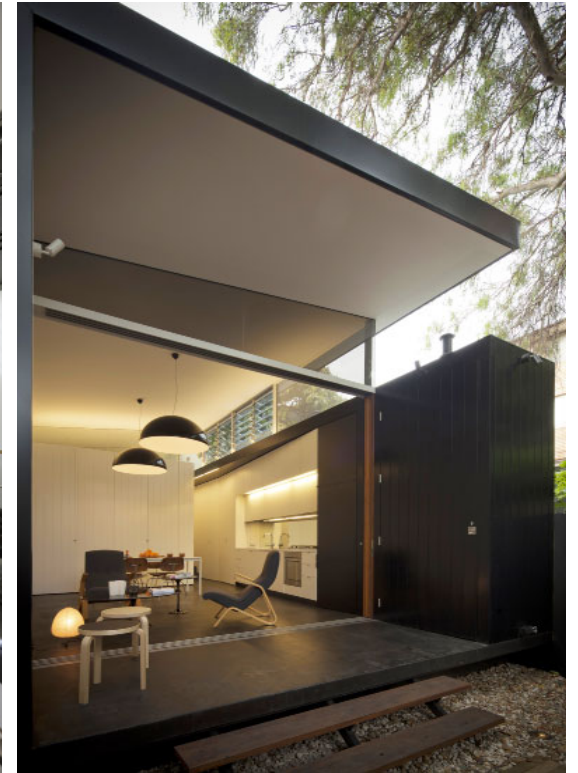
2008 - 2010

- 2012 H&G Room of the Year Awards -
Shortlisted Finalist
- 2011 Houses Awards -
Shortlisted Finalist
- 2011 IDEA Awards -
Shortlisted Finalist



christopher polly architect

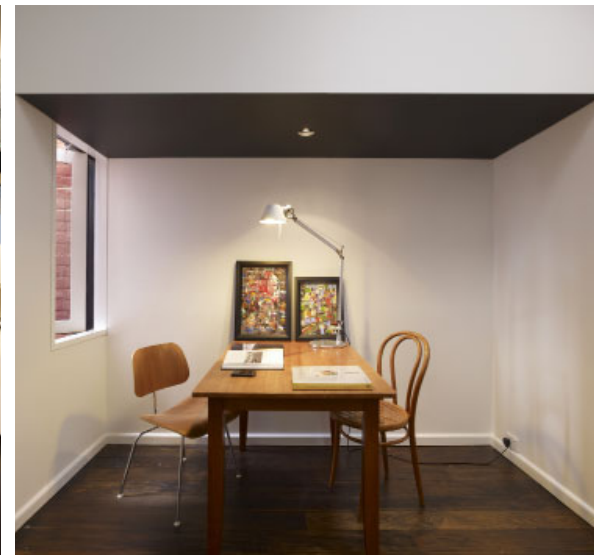
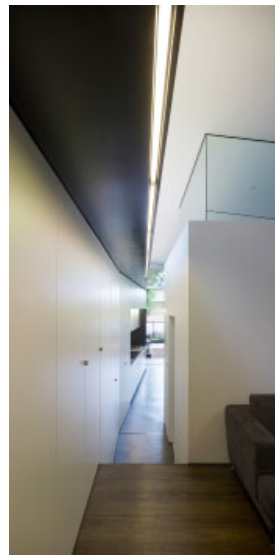
Nominated Architect: C Polly, ARB No. 7150
17 Harold Street, Newtown NSW 2042 Australia
+61 2 9516 5994
mail@christopherpolly.com
www.christopherpolly.com



Haines House Newtown Sydney

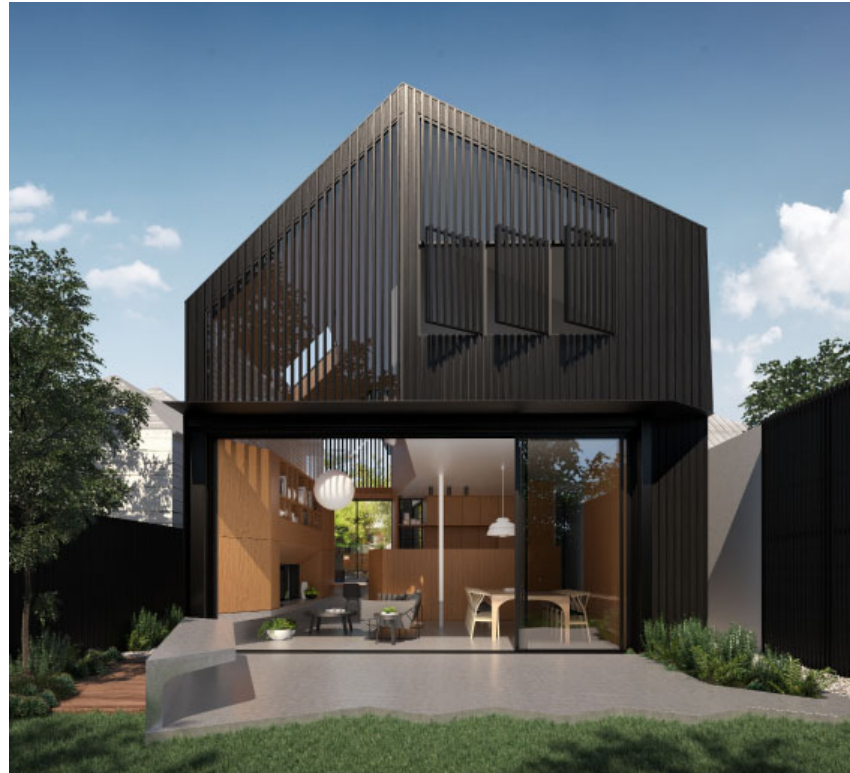
2008 - 2010

- 2012 H&G Room of the Year Awards -
Shortlisted Finalist
2011 Houses Awards -
Shortlisted Finalist
2011 IDEA Awards -
Shortlisted Finalist



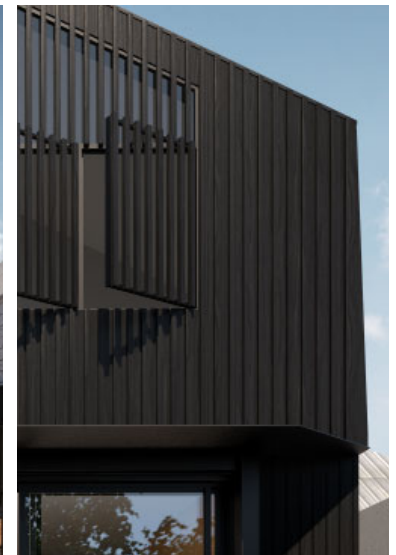
christopher polly architect

Nominated Architect: C Polly, ARB No. 7150
17 Harold Street, Newtown NSW 2042 Australia
+61 2 9516 5994
mail@christopherpolly.com
www.christopherpolly.com



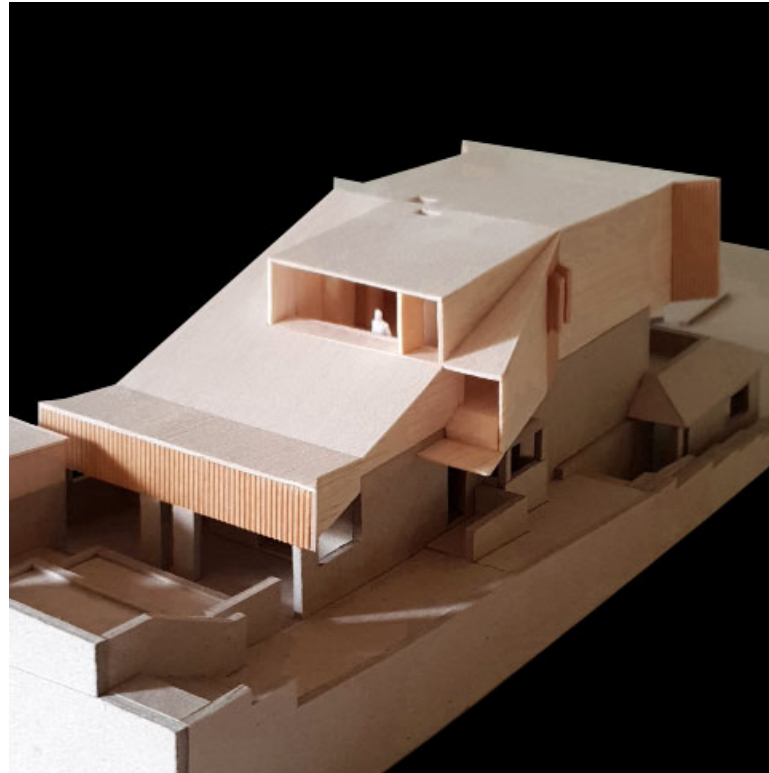
Liu Eland House Lilyfield Sydney

2016 - 2017



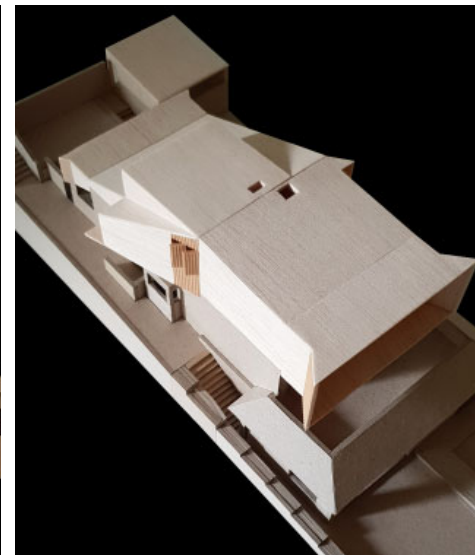
christopher polly architect

Nominated Architect: C Polly, ARB No. 7150
17 Harold Street, Newtown NSW 2042 Australia
+61 2 9516 5994
mail@christopherpolly.com
www.christopherpolly.com



Manifold House Dover Heights Sydney

2017 -



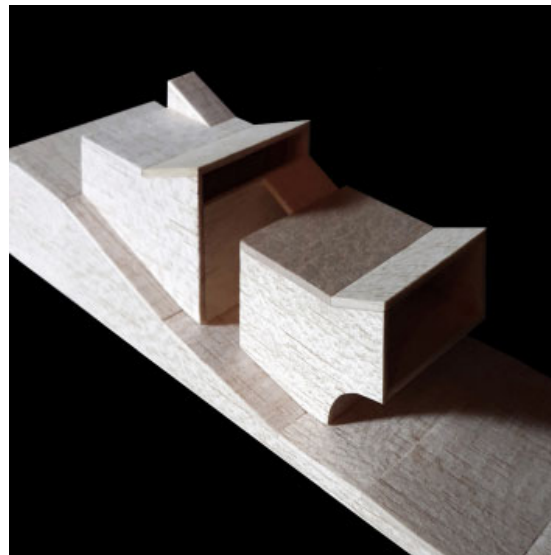
christopher polly architect

Nominated Architect: C Polly, ARB No. 7150
17 Harold Street, Newtown NSW 2042 Australia
+61 2 9516 5994
mail@christopherpolly.com
www.christopherpolly.com



Greenwich House Greenwich Sydney

2019 -



christopher polly architect

Nominated Architect: C Polly, ARB No. 7150
17 Harold Street, Newtown NSW 2042 Australia
+61 2 9516 5994
mail@christopherpolly.com
www.christopherpolly.com



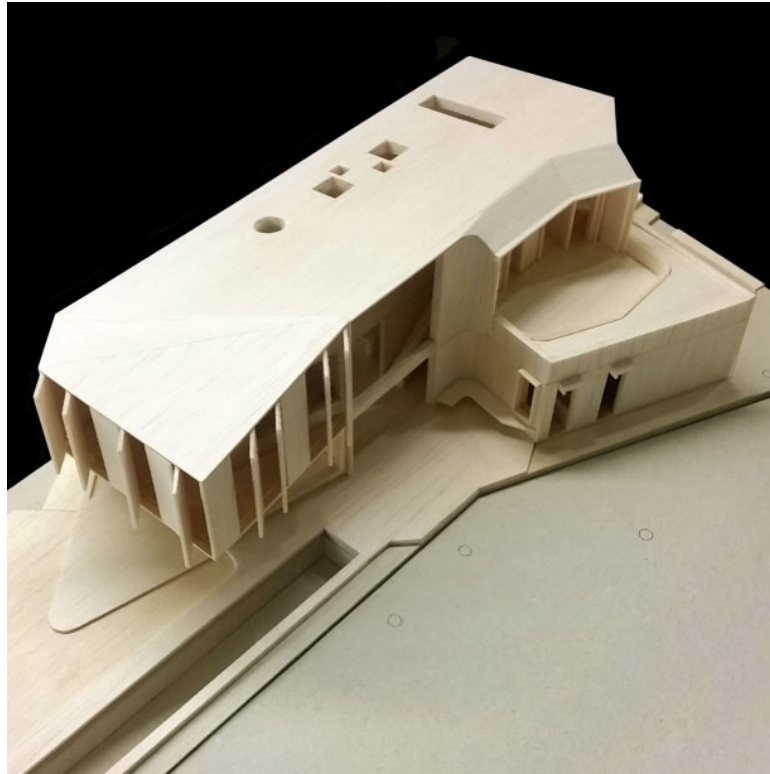
Woonona House Studio Woonona NSW

2016 - 2017



christopher polly architect

Nominated Architect: C Polly, ARB No. 7150
17 Harold Street, Newtown NSW 2042 Australia
+61 2 9516 5994
mail@christopherpolly.com
www.christopherpolly.com



Flexion House Earlwood Sydney

2016 - 2018



christopher polly architect

Nominated Architect: C Polly, ARB No. 7150
17 Harold Street, Newtown NSW 2042 Australia
+61 2 9516 5994
mail@christopherpolly.com
www.christopherpolly.com

Testimonial: Sue-Ella Prodonovich

Christopher Polly Architect provided architectural design services including defining and developing concepts; providing full design & documentation services; preparation of permits / applications and liaison with relevant regulatory authorities, community / strata management groups, councils and certifiers; and overall project and contract management. His design and expertise covered everything from the specification of the number on the front door, precision cabinetry that provided storage and defined spaces, outstanding lighting solutions, clever use of woodwork inside and out, and an innovative solution for the external terrace surface. The level of detail covered in his documentation ensured there were no surprises and the project ran smoothly. The suppliers he used (builder, engineers) were all reputable and responsive. Our experience was first class and exemplified the value an architect brings to a project.



Darling Point Penthouse

Darling Point Sydney

2009 - 2011



christopher polly architect

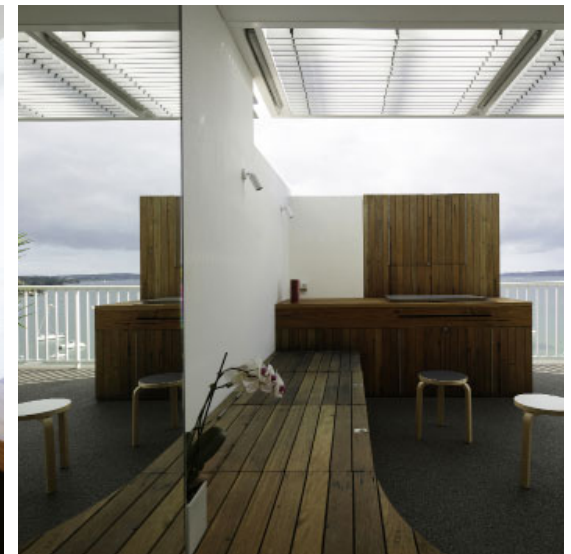
Nominated Architect: C Polly, ARB No. 7150
17 Harold Street, Newtown NSW 2042 Australia
+61 2 9516 5994
mail@christopherpolly.com
www.christopherpolly.com



Darling Point Penthouse

Darling Point Sydney

2009 - 2011



christopher polly architect

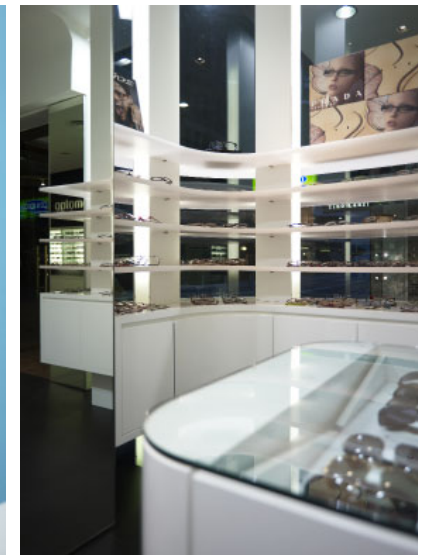
Nominated Architect: C Polly, ARB No. 7150
17 Harold Street, Newtown NSW 2042 Australia
+61 2 9516 5994
mail@christopherpolly.com
www.christopherpolly.com



EyeOpener Castlereagh Street Sydney

2008

- 2009 IDEA Awards -
Shortlisted Finalist
- 2009 Australian Interior Design Awards -
Shortlisted Finalist (Retail Design)
- 2009 Australian Interior Design Awards -
Shortlisted Finalist (Colour Commercial)
- 2009 Dulux Colour Awards -
Shortlisted Finalist



christopher polly architect

Nominated Architect: C Polly, ARB No. 7150
17 Harold Street, Newtown NSW 2042 Australia
+61 2 9516 5994
mail@christopherpolly.com
www.christopherpolly.com



Wintons Teak Showroom

Frederick Street
Artarmon Sydney

2010

