

christopher polly architect

Nominated Architect: C Polly, ARB No. 7150
17 Harold Street, Newtown NSW 2042 Australia
+61 2 9516 5994
mail@christopherpolly.com
www.christopherpolly.com



christopher polly architect

Nominated Architect: C Polly, ARB No. 7150
17 Harold Street, Newtown NSW 2042 Australia
+61 2 9516 5994
mail@christopherpolly.com
www.christopherpolly.com

profile

Christopher Polly Architect

Christopher Polly Architect is an award winning design and ideas-focused architecture practice established by Christopher Polly in Sydney in late 2005. In the same year the practice was selected by the Australian Institute of Architects for the 'Emerging Young Architects' Houses Tour and it has received wide coverage in numerous international and local publications.

The practice distills a holistic detail design and process-led approach in the delivery of highly creative and pragmatic architectural solutions that resonate simplicity, conceptual rigour and material invention. A strong emphasis is placed on a critical synthesis of the opportunities and constraints of each site, context and client brief as a catalyst for design differentiation, and uniquely appropriate outcomes in response to place, landscape and patterns of use.

The practice has extensive experience in the design and procurement of projects across varied scales and types for complex sites and programs and undertakes all stages of each project - underscored by solid working relationships with consultants and builders. Our process provides highly personalised architectural services to clients, resulting in high quality crafted outcomes that are meticulously detailed and finished. Projects encompass new houses, additions and alterations to existing houses, multi-residential developments and boutique retail, restaurant and workplace environments.

director

Christopher Polly

Christopher Polly is a registered architect who was educated at the University of New South Wales, graduating in 1997 with Class 1 Honours, the *Australian Institute of Architects NSW Chapter Prize* and the *Frank Fox Memorial Prize* for his thesis on the urban design of Battery Park City in New York.

Prior to establishing private practice, he held a senior position with Tzannes Associates and previously worked within the practices of Candalepas Associates and Lippmann Associates. He has presented works in tours and talks, has been a juror for University of Technology final architecture studio presentations and was a selected juror for the 2017 AIA NSW Architecture Awards for Residential Architecture-Houses (New and Alterations & Additions).

christopher polly architect

Nominated Architect: C Polly, ARB No. 7150
17 Harold Street, Newtown NSW 2042 Australia
+61 2 9516 5994
mail@christopherpolly.com
www.christopherpolly.com

projects / selected

- 13 - 17 **Binary House** - Woollooware Sydney
Substantial additions and alterations to original 1960's freestanding yellow brick residence
- 13 - 16 **Unfurled House** - Petersham Sydney
New two-storey addition and alterations to existing Federation freestanding brick residence
- 09 - 13 **Cosgriff House** - Annandale Sydney
Substantial additions and alterations to existing brick 2 storey freestanding residence
- 07 - 11 **Elliott Ripper House** - Rozelle Sydney
Substantial additions and alterations to existing sandstone and brick 2 storey freestanding residence
- 08 - 10 **Haines House** - Newtown Sydney
Extensive additions and alterations to existing semi-detached terrace
- 09 - 11 **Darling Point Penthouse** - Darling Point Sydney
Substantial alterations and additions to existing penthouse apartment
- 16 - **Flexion House** - Earlwood Sydney
New freestanding two-storey house with associated outdoor areas, pool and significant landscaping on a suburban site overlooking the Cooks River
- 16 - **Liu Eland House** - Lilyfield Sydney
New freestanding two-storey house on a typically modest inner-suburban site
- 15 - **Haoui House** - Drummoyne, Sydney
Ground floor re-design and first floor addition to an existing Inter-War Federation semi-detached brick residence
- 11 - **Blinco House** - Newtown Sydney
Substantial additions and alterations to existing 2 storey corner terrace
- 10 **Wintons Teak Showroom** - 1 Frederick Street, Artarmon Sydney
New flagship showroom showcasing the company's premium range of hand-crafted, solid teak outdoor furniture
- 10 **Woonona House Studio** - Woonona NSW
New house and studio spaces on a substantial yet narrow property in the south coast town of Woonona
- 12 **Spiers House** - Newtown Sydney
Substantial additions and alterations to existing semi-detached corner terrace
- 11 **Weigh May House** - Newtown Sydney
Substantial additions and alterations to existing 2 storey terrace
- 05 - 09 **EyeOpener** - 74 Castlereagh Street, Sydney
New flagship store fit-out including new display systems, joinery and signage
- 05 - 09 **Mark Gowing Design Studio** - Newtown Sydney
New studio commercial premises for Mark Gowing Design
- 05 - 07 **Golden Harbour Restaurant** - 31-33 Dixon Street, Haymarket Sydney
Refurbishment to front half of restaurant, new shopfront, new external awning and shading devices and general refurbishment to remaining restaurant
- 05 - 07 **Hird Behan House** - Newtown Sydney
Additions and alterations to existing 2 storey, 3 bed detached terrace
- 07 **Darlinghurst Retail & Commercial** - 165 Riley Street, Darlinghurst Sydney
Two storey addition to existing 2 storey heritage listed commercial building and alterations and general refurbishment to the existing 2 stories
- 06 **Surry Hills Offices & Showroom** - 86 Foveaux Street, Surry Hills Sydney
Two storey addition to existing 3 storey commercial building and alterations and general refurbishment to the existing premises
- 05 **Food @ The Overflow** - Overflow Park, Homebush Sydney
New food precinct for the Sydney Olympic Park Authority, including 34 specialty shops, adjoining dining areas and 50 market stalls along a market street

christopher polly architect

Nominated Architect: C Polly, ARB No. 7150
17 Harold Street, Newtown NSW 2042 Australia
+61 2 9516 5994
mail@christopherpolly.com
www.christopherpolly.com

publications / selected

02 - 03	H House - Newtown Sydney New additions, alterations and restoration of existing inner city 2 storey, 2 bed terrace
99 - 01	G+V House - Mascot Sydney New additions, sympathetic alterations and restoration to existing Inter-War Californian bungalow
17	Grand Designs Australia , Issue 061 - "Architecture Shorts", pp.43-44 - Unfurled House
16	Green , Issue 51 - "Simple Illusion", pp.48-54 - Unfurled House
16	Daily Telegraph, Home , 20 August 2016 - "When the sky's the limit", pp.22-23 - Unfurled House
16	Houses , Issue 110 - "Unfurled House", pp.76-83 - Unfurled House
16	The Sun Herald, Domain / Amazing Design on Sunday , 12 June 2016 - "Family opts for quality over quantity", p.7 - Unfurled House
16	Inner West Courier , 24 May 2016 - "Couples' 'adventurous' design scoops prize", p.22 - Unfurled House
14	Architectural Review Asia Pacific , No.137, Residential Issue - "Cosgriff House", pp.42-47 - Cosgriff House
14	Inside Out , July 2014 - "Back Extensions", p.120-123 - featuring Cosgriff House
14	(Inside) Interior Design Review , No.81, May / June 2014 - "The Cosgriff House", p.26 - Cosgriff House
14	Green , Issue 36 - "Modern Dugout", pp.48-53 - Cosgriff House
14	House & Garden , February 2014 - "Bright Sparks", pp.80-87 - Elliott Ripper House
13	Grand Designs (UK) , October 2013 Issue - "Digging Deep", p.20 - Cosgriff House
13	The Sydney Morning Herald, Domain , 28 September 2013 - "Modesty is best policy", p.14 - Elliott Ripper House
13	Renovate , Vol.9 No.3 Issue - "New Life", pp.44-53 - Elliott Ripper House
13	Belle , August / September 2013 - "Right Now Architecture News - Vault Line", p.46 - Cosgriff House
13	Scoop, Kitchens & Bathrooms 2013 , Edition 7 - "Australian Style - Lightplay", p.70 - Cosgriff House Bathroom
13	Timber + Design International , 2013 Vol.1 Issue 2 - "Memory Retention", pp.9-13 - Elliott Ripper House
13	The Sun Herald, Domain / From The Drawing Board , 19 May 2013 - "Homes that hit the right notes", p.40 - Cosgriff House
12	Architectural Review Asia Pacific , No.127, The Residential Issue - "One To Watch: Christopher Polly", pp.28-32 - feature on Christopher Polly
12	Monument , Issue 111, The Residential Special - "Turning The Corner", pp.56-61 - Elliott Ripper House
12	Houses , Issue 88 - "Elliott Ripper House", pp.122-128 - Elliott Ripper House
12	House & Garden , Issue 111, Collector's Edition - "2012 Top 50 Rooms", p.50 - Haines House
12	Light Home , Issue 5, The Spring Issue - "Style and Substance", pp.22-28 - Christopher Polly Architect feature containing 3 residential projects
12	Renovate , Vol.8 No.2 Issue - "Changing Rooms", pp.62-71 - Darling Point Penthouse
12	The Sydney Morning Herald, Domain , 14 April 2012 - "Sold on a size that fits all", p.14 - Elliott Ripper House
12	Daily Telegraph, Home , 28 April 2012 - "Turning pokey into perfect", pp.14-15 - Darling Point Penthouse
12	Centras (Lithuania) , March 2012 Issue - "Palėpė Sidnėjuje", pp.40-43 - Darling Point Penthouse
12	Dwell (USA) , February 2012 Issue - "Houses We Love - Back Storied", p.36 - Haines House
12	The Sydney Morning Herald, Domain , 14 January 2012 - "New chapters in old storeys", pp.4-5 - featuring Darling Point Penthouse

christopher polly architect

Nominated Architect: C Polly, ARB No. 7150
17 Harold Street, Newtown NSW 2042 Australia
+61 2 9516 5994
mail@christopherpolly.com
www.christopherpolly.com

- 11 **Architectural Review Australia**, No.122 Residential 11 - "Haines House", p.62 - **Haines House**
- 11 **Renovate**, Vol.7 No.4 Issue - "Let There Be Light", pp.88-93 - **Haines House**
- 11 **Arquitectura y Diseño (Spain)**, No.130 - "Espacios Flexibles", p.96 - **Haines House**
- 11 **Green**, Issue 21 - "Rear Window", pp.50-56 - **Haines House**
- 11 **Houses**, Issue 81 - "Haines House", pp.84-88 - **Haines House**
- 11 **Grand Designs (UK)**, June 2011 Issue - "Box of Tricks", p.21 - **Haines House**
- 11 **The Sydney Morning Herald, Domain**, 5 February 2011 - "On the light track", pp.10-11 - **Haines House**
- 09 **BOX magazine**, Vol.XXIII No.23 - **feature on Christopher Polly Architect**
- 09 **Houses**, Issue 67 - "Glazed Pavilion", pp.30-33 - **Hird Behan House**
- 06 **Daily Telegraph, Home**, 21 October 2006 - "Orange Appeal", pp.24-26 - **H House**
- 05 **Designed Life Houses** (Page One Publishing Private Ltd, Singapore) - "(Un)Suburban", pp.50-55 - **G+V House** + "Brought to Light", pp.38-43 - **H House**
- 04 **Houses**, Issue 41 - "Labour of Love", pp.78-84 - **H House**
- 02 **Houses**, Issue 31 - "Detailed Response", pp.76-81 - **G+V House**

online / selected

- 16 **ArchitectureAU**, 15 September 2016 - "Dynamic expression: Unfurled House" - **Unfurled House**
- 16 **HabitusLiving**, 21 July 2016 - "Unfurled House" - **Unfurled House**
- 16 **Design Milk**, 21 July 2016 - "Unfurled House by Christopher Polly Architect" - **Unfurled House**
- 16 **e-architect**, 21 July 2016 - "Unfurled House in Petersham" - **Unfurled House**
- 16 **Designboom**, 19 July 2016 - "Unfurled House designed by Christopher Polly Architect for a Sydney family" - **Unfurled House**
- 16 **Architizer**, 19 July 2016 - "Unfurled House" - **Unfurled House**
- 16 **ArchDaily**, 7 July 2016 - "Unfurled House / Christopher Polly Architect" - **Unfurled House**
- 16 **Contemporist**, 6 July 2016 - "Christopher Polly designs an angular rear extension for this house in Sydney" - **Unfurled House**
- 16 **Dezeen**, 6 July 2016 - "Wedge-shaped reading and sleeping nooks feature in Christopher Polly's Sydney extension" - **Unfurled House**
- 16 **Domain / Amazing Design on Sunday**, 12 June 2016 - "Amazing Design: Don't forget the garden" - **Unfurled House**
- 16 **Design Twins**, 26 February 2016 - "Design chats with architect Christopher Polly" - **Christopher Polly Architect** feature
- 15 **Dwell**, 7 March 2015 - "Renovation Near Sydney Opens Home Onto a Lush Garden" - **Cosgriff House**
- 15 **Australian Design Review**, 28 January 2015 - "Cosgriff House, Sydney" - **Cosgriff House**
- 14 **Interiors Addict**, 7 July 2014 - "Interview: architect Christopher Polly" - **Christopher Polly Architect** feature
- 14 **Inside Living**, 13 June 2014 - "Cosgriff House by Christopher Polly Architect" - **Cosgriff House**
- 14 **Australian Design Review**, 9 January 2014 - "Cosgriff House" - **Cosgriff House**
- 13 **Archilovers**, 9 November 2013 - "Cosgriff House" - **Cosgriff House**
- 13 **Phaidon Atlas**, 7 November 2013 - "Cosgriff House" - **Cosgriff House**
- 13 **Design Hunter**, 4 September 2013 - "Minimalist geometrical architecture for Sydney abode" - **Cosgriff House**

christopher polly architect

Nominated Architect: C Polly, ARB No. 7150
17 Harold Street, Newtown NSW 2042 Australia
+61 2 9516 5994
mail@christopherpolly.com
www.christopherpolly.com

online / selected

13	Domus magazine online , 24 May 2013 - "Christopher Polly: Cosgriff House" - Cosgriff House
13	Fast Company / Co.Design , 23 May 2013 - "Renovation On The Sly: Same Footprint, Twice The Volume" - Cosgriff House
13	Design Milk , 20 May 2013 - "Cosgriff House by Christopher Polly Architect" - Cosgriff House
13	MARK , 16 May 2013 - "Cosgriff House by Christopher Polly - A Clever Interplay Between Copy and Contrast" - Cosgriff House
13	Architizer , 15 May 2013 - "Cosgriff House" - Cosgriff House
13	ArchDaily , 13 May 2013 - "Cosgriff House / Christopher Polly Architect" - Cosgriff House
13	Contemporist , 11 May 2013 - "Cosgriff House by Christopher Polly Architect" - Cosgriff House
13	Dezeen , 7 May 2013 - "Cosgriff House by Christopher Polly" - Cosgriff House
13	Designboom , 4 May 2013 - "Cosgriff House by Christopher Polly Architect" - Cosgriff House
13	WAN Interiors News , 1 May 2013 - "Elliott Ripper House" - Elliott Ripper House
13	Dwell , 7 February 2013 - "An Airy Renovation In Sydney" - Elliott Ripper House
12	ArchitectureAU , 18 December 2012 - "Elliott Ripper House" - Elliott Ripper House
12	Architecture & Design , 15 November 2012 - "Profile: Christopher Polly and lightweight home design" - Christopher Polly feature
12	HabitusLiving , 10 October 2012 - "The Elliott Ripper House" - Elliott Ripper House
12	ArchDaily , 12 April 2012 - "Elliott Ripper House / Christopher Polly Architect" - Elliott Ripper House
12	Contemporist , 12 April 2012 - "Elliott Ripper House by Christopher Polly Architect" - Elliott Ripper House
12	Architizer , 12 April 2012 - "Elliott Ripper House" - Elliott Ripper House
12	Dwell , 10 February 2012 - "Back Storied" - Haines House
11	WAN Interiors News , 20 October 2011 - "Darling Point Penthouse, Sydney" - Darling Point Penthouse
11	ArchDaily , 14 October 2011 - "Darling Point Penthouse / Christopher Polly Architect" - Darling Point Penthouse
11	Freshome , 5 October 2011 - "Impressive Contemporary Penthouse Overlooking Sydney Harbour" - Darling Point Penthouse
11	Architizer , 26 September 2011 - "Darling Point Penthouse" - Darling Point Penthouse
11	ArchitectureAU , 24 September 2011 - "Haines House" - Haines House
11	Design Milk , 3 August 2011 - "Haines House by Christopher Polly" - Haines House
11	WAN Interiors News , 2 March 2011 - "Haines House" - Haines House
11	AtCasa, Corriere Della Sera , 17 February 2011 - "La casa innesto" - Haines House
11	HabitusLiving , 10 February 2011 - "The Haines House" - Haines House
11	Contemporist , 6 February 2011 - "Haines House by Christopher Polly Architect" - Haines House
11	Architizer , 2 February 2011 - "Haines House" - Haines House
11	ArchDaily , 23 January 2011 - "Haines House / Christopher Polly Architect" - Haines House
11	WAN Interiors News , 13 January 2011 - "Wintons Teak Showroom" - Wintons Teak Showroom
10	Australian Design Review , 13 October 2010 - "Wintons Teak Showroom" - Wintons Teak Showroom

christopher polly architect

Nominated Architect: C Polly, ARB No. 7150
17 Harold Street, Newtown NSW 2042 Australia
+61 2 9516 5994
mail@christopherpolly.com
www.christopherpolly.com

awards

- 17 **Architizer A+ Awards** - Unfurled House, Residential Interiors Award (Typology Category) - **Shortlisted Finalist**
- 16 **Australian Institute of Architects Awards** - Unfurled House, Residential - Houses (Alterations & Additions) - **Architecture Award Winner**
- 16 **Marrickville Medal Award** - Unfurled House - **Winner**
- 16 **Interior Design Excellence Awards (IDEA)** - Unfurled House, Residential Single Award - **Shortlisted Finalist**
- 16 **Sustainability Awards** - Unfurled House, Single Dwelling (Alterations & Additions) Award - **Shortlisted Finalist**
- 16 **Houses Awards** - Unfurled House, House Alteration & Addition under 200 sqm - **Shortlisted Finalist**
- 16 **Australian Interior Design Awards** - Unfurled House, Residential Design Award - **Shortlisted Finalist**
- 16 **Marrickville Sustainable Building Award** - Unfurled House - **Shortlisted Finalist**
- 15 **Best of Houzz Awards 2015: Design** - Portfolio of projects featured on Houzz - **Winner**
- 14 **Architizer A+ Awards** - Cosgriff House, Residential Interiors Award (Typology Category) - **Shortlisted Finalist**
- 13 **BPN Sustainability Awards** - Cosgriff House, Single Dwelling (Alterations & Additions) Award - **Shortlisted Finalist**
- 13 **Australian Institute of Architects Awards** - Elliott Ripper House, Residential - Houses Alterations & Additions - **Shortlisted**
- 13 **Houses Awards** - Cosgriff House, House Alteration & Addition under 200 sqm - **Shortlisted Finalist**
- 13 **Australian Interior Design Awards** - Cosgriff House, Residential Design Award - **Shortlisted Finalist**
- 12 **Interior Design Excellence Awards (IDEA)** - Elliott Ripper House, Single Residential Award - **Shortlisted Finalist**
- 12 **House & Garden Top 50 Room of the Year Awards** - Haines House - **Shortlisted Finalist**
- 12 **Australian Timber Design Awards** - Elliott Ripper House, Treated Pine Award - **Shortlisted Finalist**
- 11 **Houses Awards** - Haines House, House Alteration & Addition under 200 sqm - **Shortlisted Finalist**
- 11 **Interior Design Excellence Awards (IDEA)** - Haines House, Single Residential Award - **Shortlisted Finalist**
- 09 **Interior Design Excellence Awards (IDEA)** - Christopher Polly Architect, Emerging Designer Award - **Shortlisted Finalist**
- 09 **Interior Design Excellence Awards (IDEA)** - EyeOpener, Retail Design Award - **Shortlisted Finalist**
- 09 **Australian Interior Design Awards** - EyeOpener, Retail Design Award - **Shortlisted Finalist**
- 09 **Dulux Colour Awards** - EyeOpener, Commercial Interiors Award - **Shortlisted Finalist**

talks / tours

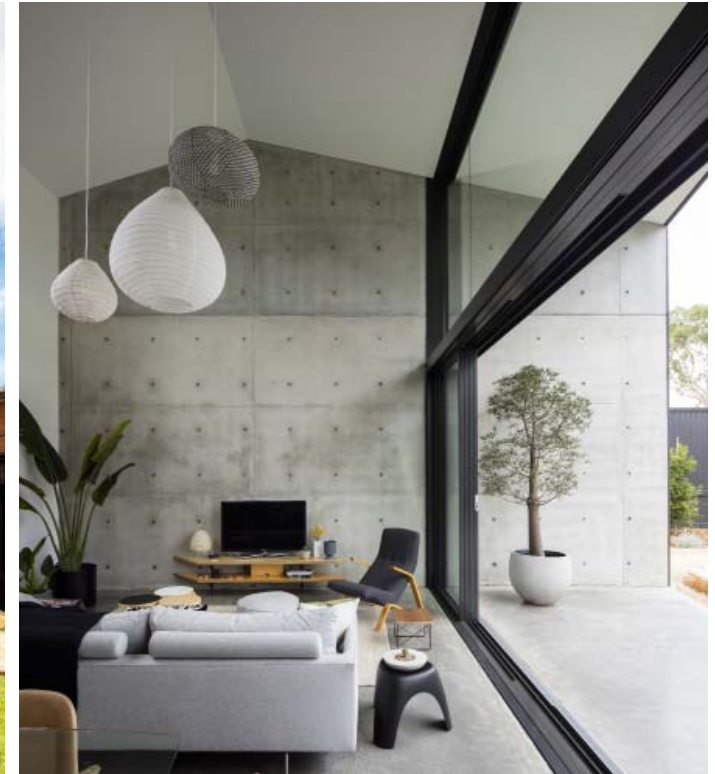
- 16 **Talk: Architecture On Show - The Marrickville Medal, Herb Greedy Hall - 7 September 2016**
Presentation of Unfurled House which took out the Marrickville Medal - focusing on the crafted design response of the project in its setting
- 14 **Talk: AIA Seminar - Adaptation & Modification (Alts & Adds) - 20 February 2014**
Presentation examining residential additions, subtractions, adaptations and modifications - and practice strategies to achieve this particular type of work
- 12 **Talk: Architecture On Show - Small Spaces / Big Ideas, Surry Hills Library - 28 April 2012**
Presentation of Elliott Ripper House, Haines House and Darling Point Penthouse projects that explored ideas relating to the possibilities of small spaces
- 13 **Tour: Inner West Architects Network (IWAN) Houses Tour - 6 December 2013**
Cosgriff House visited by a record number of IWAN members & presented by Christopher Polly as part of the Inner West Architects Network Houses Tour
- 12 **Tour: Inner West Architects Network (IWAN) Houses Tour - 26 April 2012**
Elliott Ripper House visited by members of IWAN and presented by Christopher Polly as part of the Inner West Architects Network Houses Tour
- 05 **Tour: Australian Institute of Architects 'Emerging Young Architects' Houses Tour - October 2005**
H House visited my members and presented by Christopher Polly as part of the AIA Emerging Young Architects Houses Tour

christopher polly architect

Nominated Architect: C Polly, ARB No. 7150
17 Harold Street, Newtown NSW 2042 Australia
+61 2 9516 5994
mail@christopherpolly.com
www.christopherpolly.com

A crafted lightweight volume is carefully connected to the retained and refashioned rear of an original 1960's brick envelope to enact clear planning, cost and environmental values in an articulated binary composition - a cellular and private front, with an open and public rear that expands to its setting.

The original bungalow maintains its modern heritage values, enabling the cultural memory of its suburban type to be preserved within its locality, while vaulted skylights carved within the original roof form expand spaces to light and sky. An intermediary link sharply folds to offer spatial release while locating interstitial garden courts for light and ventilation at the centre of the plan - in turn, promoting spatial interplay across private and public zones. The new pavilion provides a volumetrically expansive double-height living area which serves as a generously proportioned 'garden room' with large apertures capturing sky and landscape views.



Binary House Woollooware Sydney

2013 - 2017



christopher polly architect

Nominated Architect: C Polly, ARB No. 7150
17 Harold Street, Newtown NSW 2042 Australia
+61 2 9516 5994
mail@christopherpolly.com
www.christopherpolly.com



Binary House Woolooware Sydney

2013 - 2017

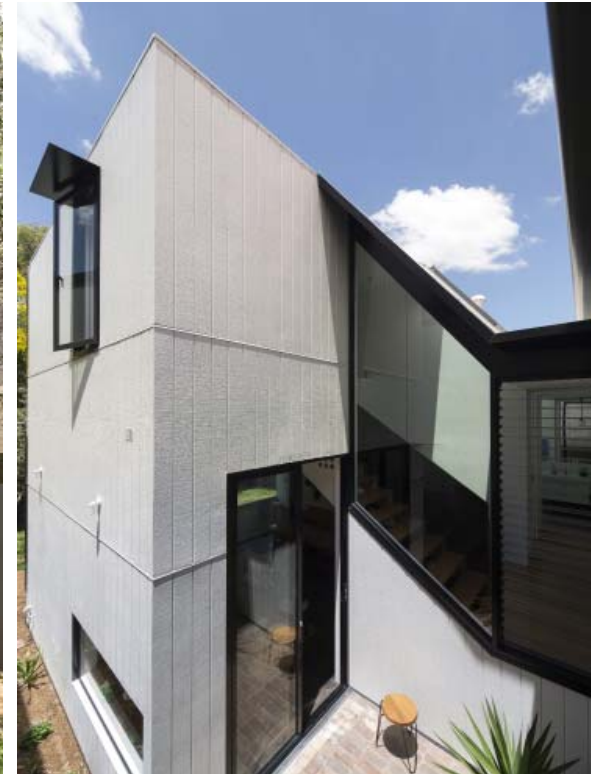


christopher polly architect

Nominated Architect: C Polly, ARB No. 7150
17 Harold Street, Newtown NSW 2042 Australia
+61 2 9516 5994
mail@christopherpolly.com
www.christopherpolly.com

Testimonial: Warrick Goldsmith

We engaged Chris to design a renovation on our house after seeing his previous work. Particularly, his spectacular Elliott Ripper House in Sydney's Rozelle. Throughout the entire process from design to completion of construction, Chris has acted in the most professional manner of any person I've ever met. His talent for architecture & rigorous attention to detail is exemplary. The resulting product has been beyond our wildest expectations. For anyone with a passion for good design, I couldn't recommend Chris highly enough for engagement in their project.



Unfurled House Petersham Sydney

2013 - 2016

- 2016 AIA Awards, Residential Architecture, Houses (Alterations & Additions) - Architecture Award Winner
- 2016 Marrickville Medal Award - Winner
- 2017 Architizer A+ Awards - Shortlisted Finalist
- 2016 Sustainability Awards - Shortlisted Finalist
- 2016 IDEA Awards - Shortlisted Finalist
- 2016 Houses Awards - Shortlisted Finalist
- 2016 Australian Interior Design Awards - Shortlisted Finalist
- 2016 Marrickville Sustainable Building Award - Shortlisted Finalist



christopher polly architect

Nominated Architect: C Polly, ARB No. 7150
17 Harold Street, Newtown NSW 2042 Australia
+61 2 9516 5994
mail@christopherpolly.com
www.christopherpolly.com



Unfurled House Petersham Sydney

2013 - 2016

- 2016 AIA Awards, Residential Architecture, Houses (Alterations & Additions) - *Architecture Award Winner*
- 2016 Marrickville Medal Award - *Winner*
- 2017 Architizer A+ Awards - *Shortlisted Finalist*
- 2016 Sustainability Awards - *Shortlisted Finalist*
- 2016 IDEA Awards - *Shortlisted Finalist*
- 2016 Houses Awards - *Shortlisted Finalist*
- 2016 Australian Interior Design Awards - *Shortlisted Finalist*
- 2016 Marrickville Sustainable Building Award - *Shortlisted Finalist*



christopher polly architect

Nominated Architect: C Polly, ARB No. 7150
17 Harold Street, Newtown NSW 2042 Australia
+61 2 9516 5994
mail@christopherpolly.com
www.christopherpolly.com

Testimonial: Georgina Cosgriff

We engaged Christopher Polly Architect to design and manage the renovation of our two bedroom home. Chris had a positive "can-do" attitude and an extremely creative vision. He made full use of our sloping site to create a wonderful four bedroom family home which accommodated council's strict development controls.

Chris was also able to incorporate our love of the garden and, in particular, a huge jacaranda tree into the design. Chris has a very professional attitude and his thoroughness in the design process meant that we had very little difficulty during the DA stage.

Chris also managed the build and ensured that the finished project met his high expectations. Chris is attentive and very open with communication. We would have no hesitation in recommending Christopher Polly Architect.



Cosgriff House Annandale Sydney

2009 - 2013

- 2014 Architizer A+ Awards - Shortlisted Finalist
- 2013 Sustainability Awards - Shortlisted Finalist
- 2013 Houses Awards - Shortlisted Finalist
- 2013 Australian Interior Design Awards - Shortlisted Finalist



christopher polly architect

Nominated Architect: C Polly, ARB No. 7150
17 Harold Street, Newtown NSW 2042 Australia
+61 2 9516 5994
mail@christopherpolly.com
www.christopherpolly.com



Cosgriff House Annandale Sydney

2009 - 2013

- 2014 Architizer A+ Awards - *Shortlisted Finalist*
- 2013 Sustainability Awards - *Shortlisted Finalist*
- 2013 Houses Awards - *Shortlisted Finalist*
- 2013 Australian Interior Design Awards - *Shortlisted Finalist*



christopher polly architect

Nominated Architect: C Polly, ARB No. 7150
17 Harold Street, Newtown NSW 2042 Australia
+61 2 9516 5994
mail@christopherpolly.com
www.christopherpolly.com

Testimonial: Megan Ripper

We engaged Chris to design and project manage a large scale extension and renovation to our house and couldn't have been happier with the end result. Chris was able to come up with some fantastic ideas that gelled well with the aesthetic we'd hoped to achieve, and the little details he was able to incorporate really took the project to a level beyond expectations. Chris is incredibly professional to deal with, and aside from his great ideas and an eye for detail, we were impressed with the way he was able to run the tender process and manage our appointed builders throughout the project. The result? A project that came in on time and budget, and a house we love spending every minute in! Chris deserved all of the nominations and print media exposure our house received once completed. We wouldn't hesitate to use Chris again on a future project and have recommended him to others.



Elliott Ripper House Rozelle Sydney

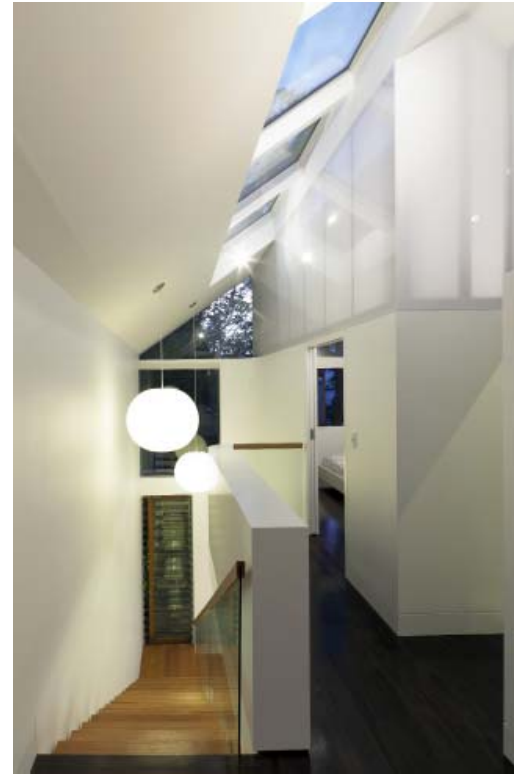
2007 - 2011

- 2013 AIA Awards, Residential Architecture, Houses (Alterations & Additions) - Shortlisted Finalist
- 2012 IDEA Awards - Shortlisted Finalist
- 2012 Australian Timber Design Awards - Shortlisted Finalist



christopher polly architect

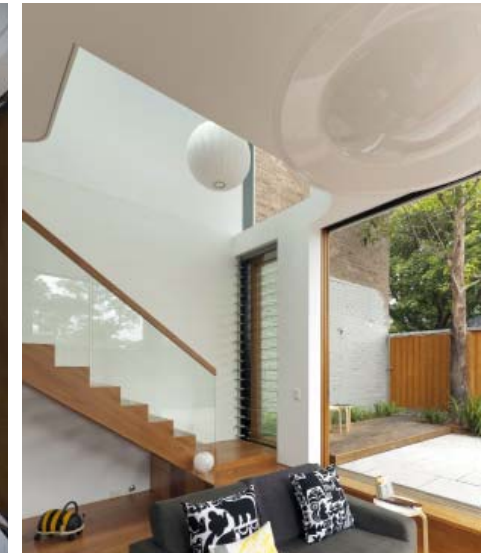
Nominated Architect: C Polly, ARB No. 7150
17 Harold Street, Newtown NSW 2042 Australia
+61 2 9516 5994
mail@christopherpolly.com
www.christopherpolly.com



Elliott Ripper House Rozelle Sydney

2007 - 2011

- 2013 AIA Awards, Residential Architecture, Houses (Alterations & Additions) - *Shortlisted Finalist*
- 2012 IDEA Awards - *Shortlisted Finalist*
- 2012 Australian Timber Design Awards - *Shortlisted Finalist*



christopher polly architect

Nominated Architect: C Polly, ARB No. 7150
17 Harold Street, Newtown NSW 2042 Australia
+61 2 9516 5994
mail@christopherpolly.com
www.christopherpolly.com

Testimonial: Georgia Haines

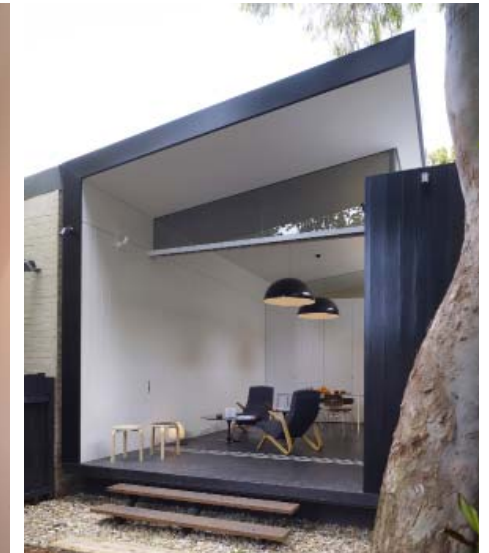
I hired Christopher Polly to design and project manage the renovation of my single story semi in Newtown. Chris worked very well with my brief and created an addition that was elegant, nuanced and suited to my needs. He was honest with me and managed my expectations well. He managed all aspects of council approval and tender preparation. His talent for thoughtful design is matched by his attention to detail and keen desire to maintain the integrity of the design throughout the build. His instinct for builder selection was spot on and the resultant home has done me in good stead for many years now. I would highly recommend him to anyone.



Haines House Newtown Sydney

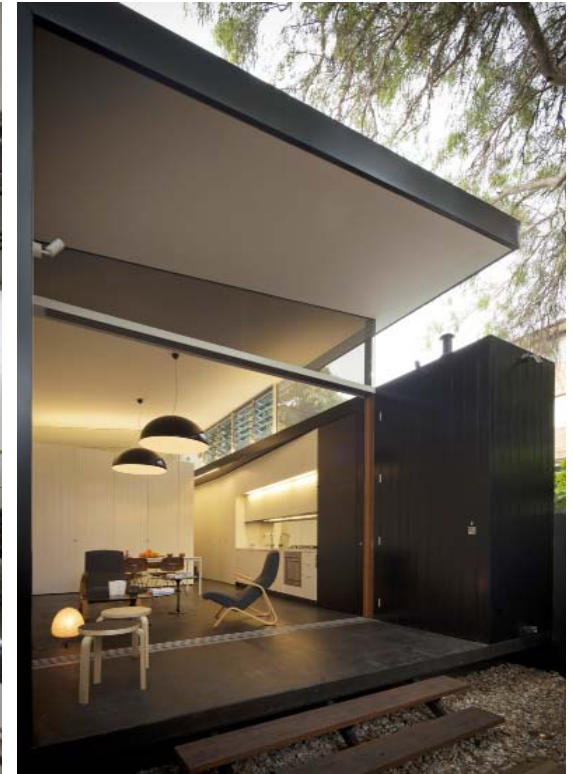
2008 - 2010

- 2012 H&G Room of the Year Awards -
Shortlisted Finalist
- 2011 Houses Awards -
Shortlisted Finalist
- 2011 IDEA Awards -
Shortlisted Finalist



christopher polly architect

Nominated Architect: C Polly, ARB No. 7150
17 Harold Street, Newtown NSW 2042 Australia
+61 2 9516 5994
mail@christopherpolly.com
www.christopherpolly.com



Haines House Newtown Sydney

2008 - 2010

- 2012 H&G Room of the Year Awards -
Shortlisted Finalist
- 2011 Houses Awards -
Shortlisted Finalist
- 2011 IDEA Awards -
Shortlisted Finalist

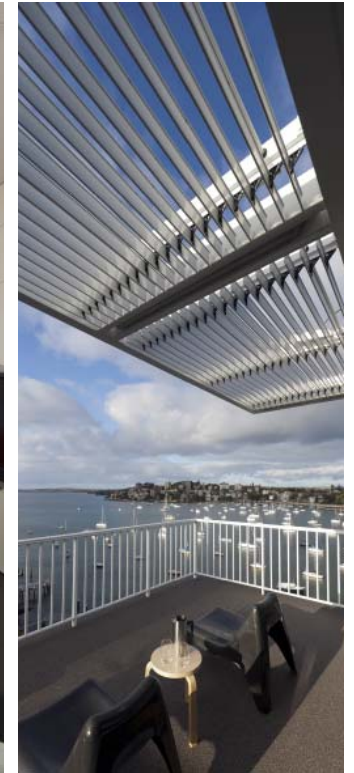


christopher polly architect

Nominated Architect: C Polly, ARB No. 7150
17 Harold Street, Newtown NSW 2042 Australia
+61 2 9516 5994
mail@christopherpolly.com
www.christopherpolly.com

Testimonial: Sue-Ella Prodonovich

Christopher Polly Architect provided architectural design services including defining and developing concepts; providing full design & documentation services; preparation of permits / applications and liaison with relevant regulatory authorities, community / strata management groups, councils and certifiers; and overall project and contract management. His design and expertise covered everything from the specification of the number on the front door, precision cabinetry that provided storage and defined spaces, outstanding lighting solutions, clever use of woodwork inside and out, and an innovative solution for the external terrace surface. The level of detail covered in his documentation ensured there were no surprises and the project ran smoothly. The suppliers he used (builder, engineers) were all reputable and responsive. Our experience was first class and exemplified the value an architect brings to a project.



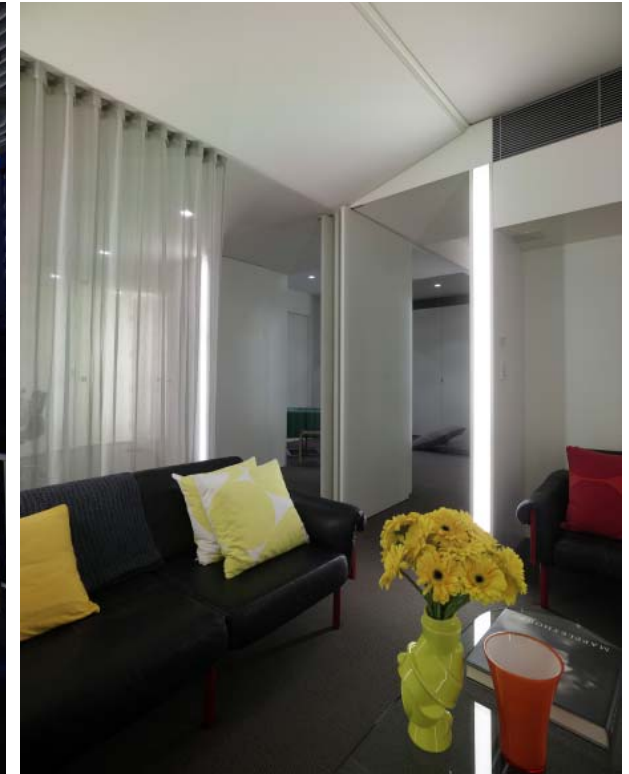
Darling Point Penthouse Darling Point Sydney

2009 - 2011



christopher polly architect

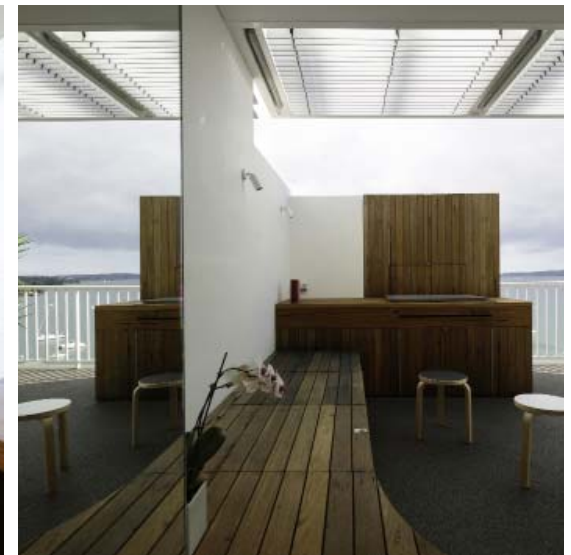
Nominated Architect: C Polly, ARB No. 7150
17 Harold Street, Newtown NSW 2042 Australia
+61 2 9516 5994
mail@christopherpolly.com
www.christopherpolly.com



Darling Point Penthouse

Darling Point Sydney

2009 - 2011



christopher polly architect

Nominated Architect: C Polly, ARB No. 7150
17 Harold Street, Newtown NSW 2042 Australia
+61 2 9516 5994
mail@christopherpolly.com
www.christopherpolly.com



Wintons Teak Showroom

Frederick Street
Artarmon Sydney

2010



christopher polly architect

Nominated Architect: C Polly, ARB No. 7150
17 Harold Street, Newtown NSW 2042 Australia
+61 2 9516 5994
mail@christopherpolly.com
www.christopherpolly.com



Liu Eland House Lilyfield Sydney

2016 -



christopher polly architect

Nominated Architect: C Polly, ARB No. 7150
17 Harold Street, Newtown NSW 2042 Australia
+61 2 9516 5994
mail@christopherpolly.com
www.christopherpolly.com



Woonona House Studio Woonona NSW

2010



christopher polly architect

Nominated Architect: C Polly, ARB No. 7150
17 Harold Street, Newtown NSW 2042 Australia
+61 2 9516 5994
mail@christopherpolly.com
www.christopherpolly.com



EyeOpener Castlereagh Street Sydney

2008

- 2009 IDEA Awards -
Shortlisted Finalist
- 2009 Australian Interior Design Awards -
Shortlisted Finalist (Retail Design)
- 2009 Australian Interior Design Awards -
Shortlisted Finalist (Colour Commercial)
- 2009 Dulux Colour Awards -
Shortlisted Finalist



christopher polly architect

Nominated Architect: C Polly, ARB No. 7150
17 Harold Street, Newtown NSW 2042 Australia
+61 2 9516 5994
mail@christopherpolly.com
www.christopherpolly.com



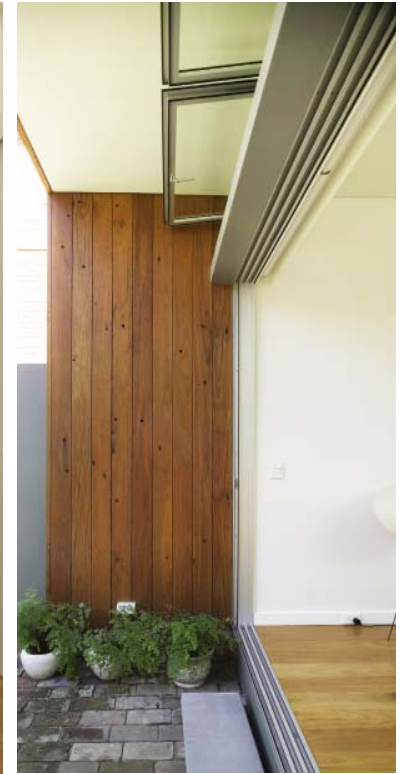
Haoui House Drummoyne Sydney

2015 -



christopher polly architect

Nominated Architect: C Polly, ARB No. 7150
17 Harold Street, Newtown NSW 2042 Australia
+61 2 9516 5994
mail@christopherpolly.com
www.christopherpolly.com



Hird Behan House Newtown Sydney

2005 - 2007



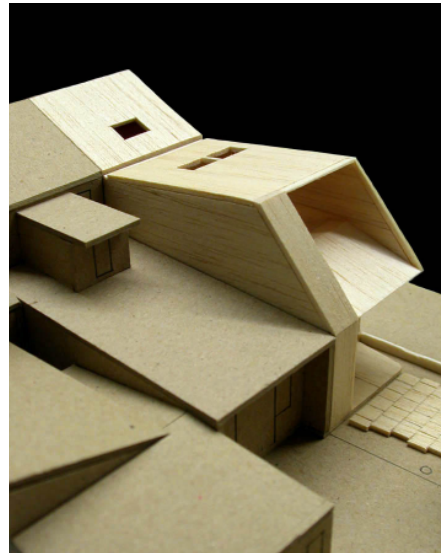
christopher polly architect

Nominated Architect: C Polly, ARB No. 7150
17 Harold Street, Newtown NSW 2042 Australia
+61 2 9516 5994
mail@christopherpolly.com
www.christopherpolly.com



Blinco House Newtown Sydney

2011 -



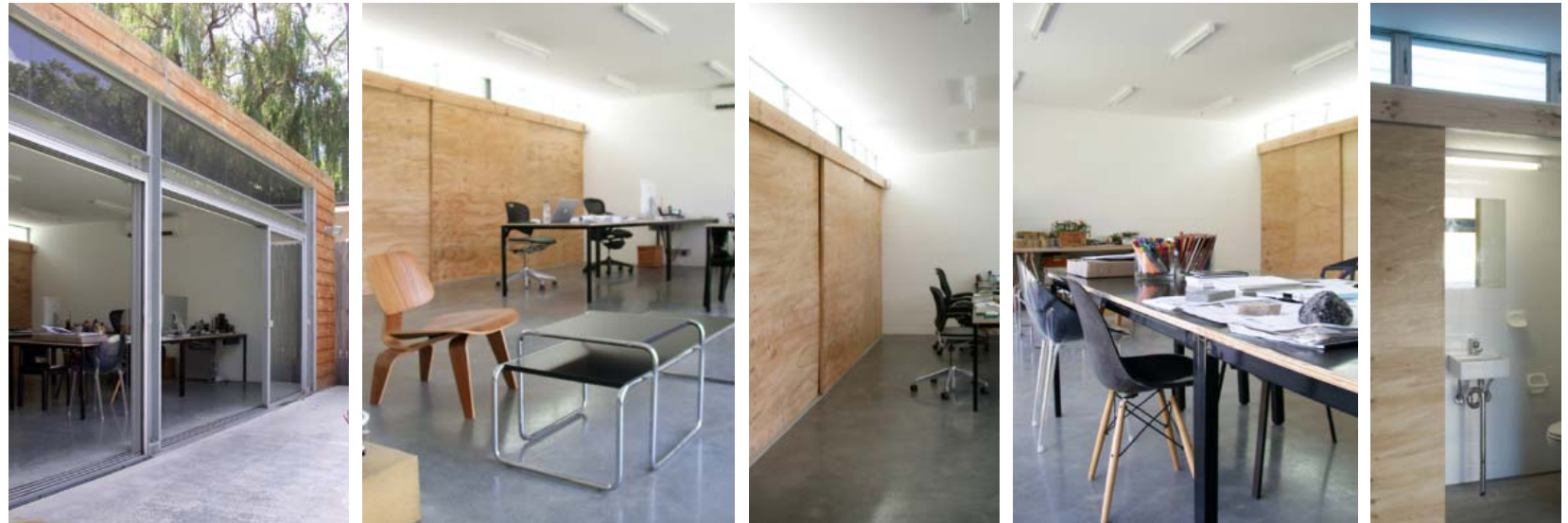
christopher polly architect

Nominated Architect: C Polly, ARB No. 7150
17 Harold Street, Newtown NSW 2042 Australia
+61 2 9516 5994
mail@christopherpolly.com
www.christopherpolly.com



Mark Gowing Design Studio Newtown Sydney

2005 - 2009



christopher polly architect

Nominated Architect: C Polly, ARB No. 7150
17 Harold Street, Newtown NSW 2042 Australia
+61 2 9516 5994
mail@christopherpolly.com
www.christopherpolly.com



Spiers House Newtown Sydney

2012



christopher polly architect

Nominated Architect: C Polly, ARB No. 7150
17 Harold Street, Newtown NSW 2042 Australia
+61 2 9516 5994
mail@christopherpolly.com
www.christopherpolly.com



Weigh May House Newtown Sydney

2011



christopher polly architect

Nominated Architect: C Polly, ARB No. 7150
17 Harold Street, Newtown NSW 2042 Australia
+61 2 9516 5994
mail@christopherpolly.com
www.christopherpolly.com



Golden Harbour Restaurant

Dixon Street
Haymarket Sydney

2005 - 2007



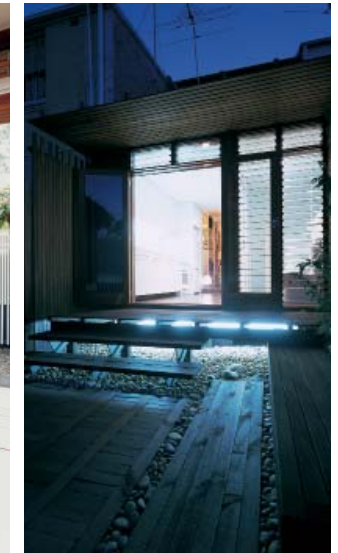
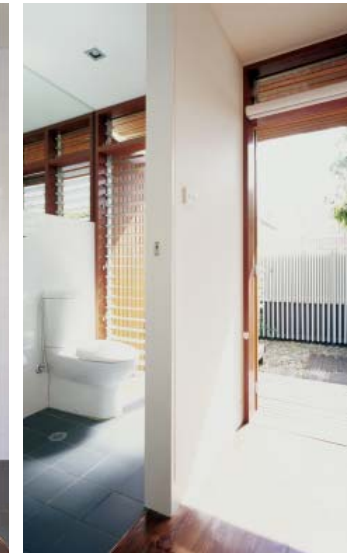
christopher polly architect

Nominated Architect: C Polly, ARB No. 7150
17 Harold Street, Newtown NSW 2042 Australia
+61 2 9516 5994
mail@christopherpolly.com
www.christopherpolly.com



H House Newtown Sydney

2002 - 2003



christopher polly architect

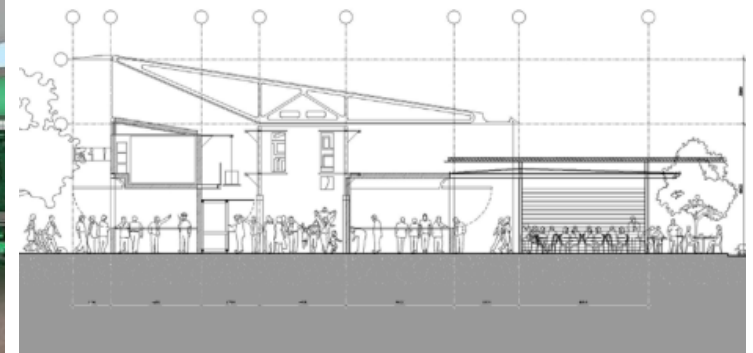
Nominated Architect: C Polly, ARB No. 7150
17 Harold Street, Newtown NSW 2042 Australia
+61 2 9516 5994
mail@christopherpolly.com
www.christopherpolly.com



Food @ The Overflow Overflow Park Homebush Sydney

2005

in collaboration with
Welsh + Major Architects



christopher polly architect

Nominated Architect: C Polly, ARB No. 7150
17 Harold Street, Newtown NSW 2042 Australia
+61 2 9516 5994
mail@christopherpolly.com
www.christopherpolly.com



Darlinghurst Retail & Commercial Riley Street Darlinghurst Sydney

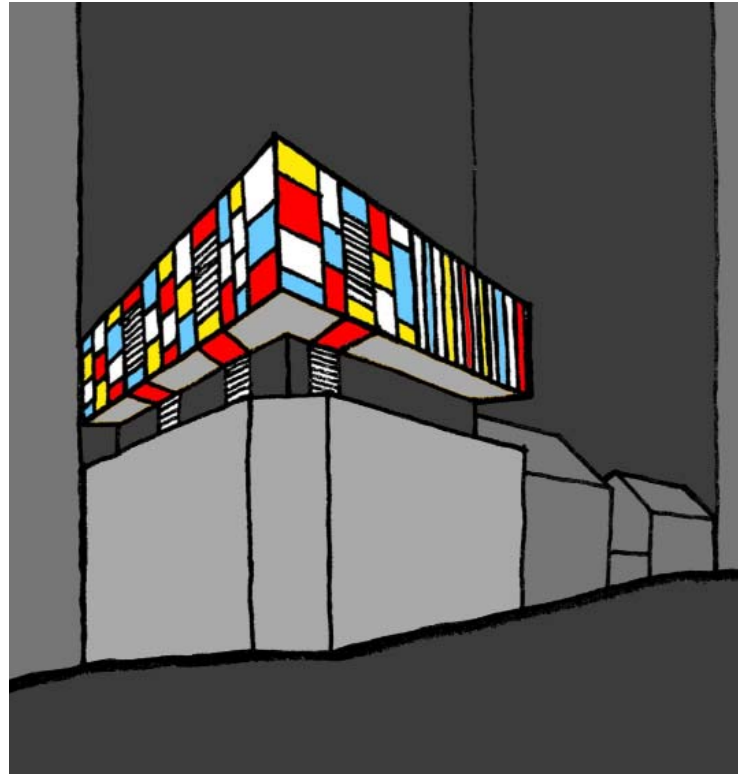
2007

in collaboration with
Justin Matthiesson Design



christopher polly architect

Nominated Architect: C Polly, ARB No. 7150
 17 Harold Street, Newtown NSW 2042 Australia
 +61 2 9516 5994
 mail@christopherpolly.com
 www.christopherpolly.com



Surry Hills Offices & Showroom

Foveaux Street
 Surry Hills Sydney

2006

